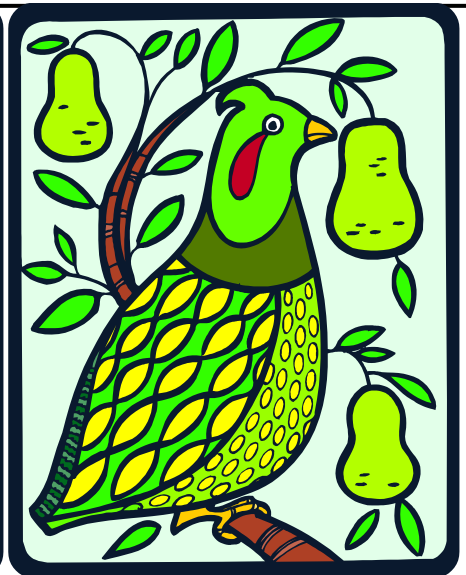
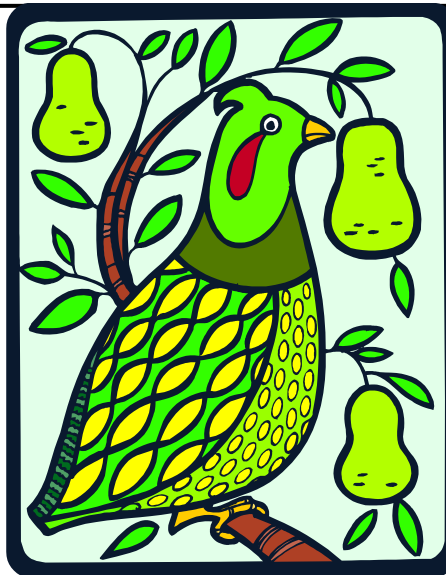
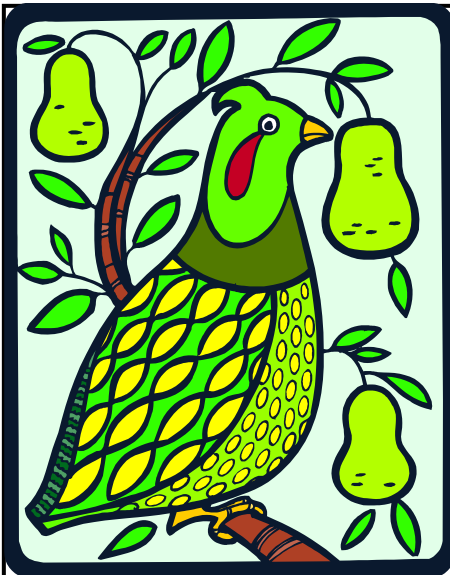


AMERICAN RHODODENDRON SOCIETY

Eureka Chapter

The next meeting
Thursday, December 10 — 6:00 p.m.
Woman's Club
1531 J Street
Eureka, California



Holiday Potluck

Thursday December 10th at 6:00 PM
Woman's Club, 1531 J Street, Eureka

Members and guests should bring their favorite potluck main dish, salad, vegetable, side dish or dessert. Coffee, tea and juice will be provided; BYOW (wine) if you wish. Plates, napkins, cups and utensils will be provided.

Everyone who entered a flower, picture or arrangement in the April Flower Show will receive one raffle ticket per entry for a special raffle. There will be lots of other raffle items, plants, books, RHS magazines and a few collectables.

Don Wallace and Tim Walsh will each provide a special program.

Photos are those of the Newsletter editor, June Walsh, unless otherwise noted. Permission is granted to reprint any portion of this publication provided credit to the author and Chapter is given.

Rh. 'Pink Delight'



Plant of the Month

Rhododendron 'Pink Delight'

This form of rhododendron arboreum is one of the fastest and biggest growers that I know of among the elepidote group of rhododendrons. Putting on at least 12 inches of growth per year, the plant will be 10 ft. tall in 10 years. The flowers are such a delight, as they open in the dead of winter. The buds begin to swell in December, and there are flowers open in January and into February. White flowers with bright pink edges really light that dark area of the garden, especially when backed by a grove of trees. Dark-green leaves with silver-plastered indumentum become 8"-10" long, indicative of the species. This plant blooms a little before, and sometimes with our locally popular 'Cornubia' with its red flowers, so it is a nice combination to group together. They will both be large, so make sure you have the room. *Photo and text by Don Wal-*

December Notes from Vice President Tim Walsh

Here it is a few weeks before Christmas and I've started adding to my planting scheme. At the time of this writing the weather has given us short periods of rain followed by several nice sunny days in a row. While the ground may be a bit wet, it's a perfect time to get those Rhodies that you won in raffles or purchased at our chapter sales, into the ground. While you don't want to fertilize heavily at this time you do want to add soil amendments like compost and maybe a little dolomitic lime and trace minerals just before you "put them to bed" under a nice layer of mulch. Be careful not to bring the mulch right up to the trunk of the plant as that may cause stem rot. Plant them a little bit high and our normally wet winter will take care of it after that.

Speaking of the holidays, why not a gift that keeps on giving and just gets better over time? We'll have a bunch of Rhodies and companion plants at our **Dec. 10th.** Christmas party. Prices are very low (under \$10 in most cases) and the rewards are high and long-lasting, especially if *you* will plant them for your lucky recipient! We will have ARS Care Guides available to include with your gifts.

We are looking forward to a really good party this year. Don Wallace and I are putting together a couple of short programs for you and the potluck goodies made by your chapter friends are always extraordinary! I hope that every member can make it, and bring a friend!



Eureka Chapter, American Rhododendron Society General Meeting Minutes for October 21, 2009

The meeting was called to order at 7:15 p.m. by President Betty Bottemiller.

Guests were introduced and a free plant was given out to the members who brought guests. Betty welcomed the new members who joined at the last meeting. There were 41 members and guests in attendance.

Nelda Palmer informed members that she would be available to collect dues from those who had not yet renewed. Visitors were invited to become members and get their own free plant.

Betty reminded people that normal meetings are on the fourth Thursday, with no meeting in November, and the seasonal party on December 10th.

Don Wallace explained that instead of a raffle for plants there would be a silent auction. Bids started at \$10 for most plants and \$14 for the more desirable or rarer selections. The plants were brought by Mike Stewart from his nursery and included many highly desirable acquisitions. Don described the lot with some assistance from Mike. A list of the plants with blossom color and approximate height at 10 years will be listed at the end of the minutes along with the name of the person winning that plant in the silent auction.

A short break was taken to allow everyone to get snacks and make their bids for plants before the slide show. Ellie Gayner, Doug Batt and Marilyn Batt furnished refreshments.

Don Wallace introduced the speaker, Mike Stewart. Mike is a former ARS President and runs an excellent nursery named Dover Nursery in Sandy, Oregon.

Mike gave plaudits to his wife, Maria, for doing the driving. He then went into a slide show that listed many of the pioneers of Rhododendron hybridizing and showed samples of some of their best hybrids. Our own Don Wallace was included in the list and samples of some of his hybrids were shown. Many of the slide of hybrids were tagged with the parentage, which was very educational. Then, by previous request, Mike showed a few more slides of his collecting trip to China. A stunning display, including photos of the army of terra cotta soldiers that were found buried in 1970.

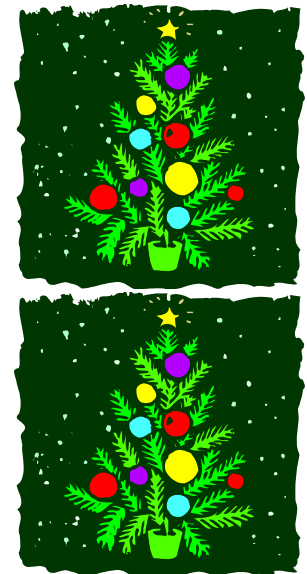
In answer to a question, Mike said that at Dover Nursery they take their cuttings in August and use heated water under the propagation boxes.

Carol Dunning won the door prize. Betty Bottemiller won the auction of the 'Sino Grande.

Results of the Silent Auction:

Plant Name	10yr ht.	Blossom color	Auction winner
Nancy Evans	4'	yellow	Charles Vaughn
Flaming Comet	5'	yel w/orng edge	Jacque McShane
Peter Bee	1-3'	yellow	Jacque McShane
Amiblue	5-6'	blue	Jerry Reynolds
Whisperingrose	3'	pink	Jacque McShane
Opal Luster	4-5'	cream/pink	Sue Benzinger
Honey Butter	4'	yel/peach/org	Tom Martin
Yaku Sunrise	2'	lt pink & magenta	Marilyn Martino
Something Lovely	small	lt pink	Dorothy Dilling
Berg's Queen Bee	small	lt pink to white	Dorothy Dilling
Many Moons	5-6'	butter yellow	Dorothy Dilling
Belva's Joy	3'	red/pink	Margaret Zlatkoff
Seaview Sunset	3-4'	orange & yellow	John Hemmann
Glowing Gold	3'	golden	Dorothy Dilling
Silver Skies		wh w/pink edges	Sue Benzinger
Laramie	large	white	Sharon Hunter

Respectfully submitted,
Trish Gidding-Ortiz, Secretary





Eureka Chapter is published monthly except during July and August. Submissions from members are encouraged and should be mailed to June Walsh, Bulletin Editor, 2050 Irving Drive, Eureka, CA 95503-7022. Membership information and applications are also available from June Walsh. Eureka Chapter is a member of the Humboldt Botanical Gardens Foundation, Eureka, Calif, and The Rhododendron Species Foundation, Federal Way, Wash. Eureka Chapter is a chapter of the American Rhododendron Society.

Eureka Chapter

Eureka Chapter/American Rhododendron Society
2050 Irving Drive
Eureka, CA 95503-7022

Future Programs

Thursday December 10, 2009, 6:00 p.m.	Holiday Potluck
Thursday January 28, 2010, 7:00 p.m.	Mike Bones, Bonsai
Thursday February 25, 2010 7:00 p.m.	Don Selcer, Plant Hunting in Sikkim
Thursday March 25, 2010 7:00 p.m.	Gary Todoroff, Garden Photography
Thursday April 22, 2010 7:00 p.m.	Fred Whitney, ARS Past Pres., Garden travels
April 23 through April 25, 2010	Rhododendron Show and Plant Sale
Thursday May 27, 2010 6:00 p.m.	Pizza and Mini Show
Sunday June 13, 2010	Garden Tour and Potluck Picnic

New meeting Location, We will be meeting at the Woman's Club at 1531 J Street in Eureka unless otherwise announced. Programs are subject to change.

Welcome New Members

Sharon Hunter, Bayside
Martin and Carol Newitz,
Arcata
Charles Vaughn,
Fieldbrook



Eureka Chapter Officers and Board Members

September 2009 to June 2010

Betty Bottemiller, President	707-822-4935	elizabethbottemiller@yahoo.com
Tim Walsh, Vice President	707-443-0604	timwalsh1@suddenlink.net
Trish Ortiz, Secretary	707-822-3330	tgiddingortiz@gmail.com
June Walsh, Treasurer, Membership, Newsletter	707-443-0604	RhodyHostel@suddenlink.net
Don Wallace, Programs	707-839-8777	donw@singtree.com
Bruce and Nelda Palmer, Show Co-Chairs	707-443-8049	bnpalmer@northcoast.com
Ellie Gayner, Publicity	707-443-1291	egayner@hotmail.com
Jerry Reynolds, Director	707-822-6580	jerry_reynolds@suddenlink.net
Doug Batt, Director	707-444-2702	dbattspot@sbcglobal.net