

AMERICAN RHODODENDRON SOCIETY

Eureka Chapter

The next meeting

*Thursday March 25th, 7:00 p.m.
Woman's Club
1531 J Street
Eureka, California*

Pre-Meeting No Host Dinner 5:15

Marcelli's Ravioli, 1323 5th Street
Eureka, ***Call Nelda***, 707-443-8049
*For a reservation so there will be enough
seating, Pre Fix menu and price*



2010

Garden Photography

The Eureka Chapter of the American Rhododendron Society will welcome one of its newer members, **Gary Todoroff**, as our March 25th program speaker. The meeting will be held at the Woman's Club 1531 J Street in Eureka beginning at 7:00 p.m.

Throughout careers in chemistry, broadcasting, computers and teaching, Gary has kept a hand in photography ever since first snapping a camera shutter when he was eleven years old. Recent work has included the 2009 Calendar for Coast Central Credit Union, "Over the North Coast", and a 10x20 foot photographic wall mural for the Coast Guard wing of the new California Aerospace Museum in Sacramento. Along with sales of fine art photographs of our Redwood landscapes, Gary does business in commercial and aerial photography. He teaches photography and Photoshop classes at College of the Redwoods.

Gary Todoroff will present the program, "Garden Photography". He hopes to help you make better photographs of the dramatic landscape of nature and color all around us. Using photographs from around the world, the program will include some technical examples of light, exposure and equipment. However, Gary will include enough examples of our beautiful world to keep anyone interested who simply wants to enjoy gardens and flowers through photography.

Photograph by Gary Todoroff



Photos are those of the Newsletter editor, June Walsh, unless otherwise noted. Permission is granted to reprint any portion of this publication provided credit to the author and Chapter is given.

THE WORD: LEPIDOTE

By Bruce Palmer

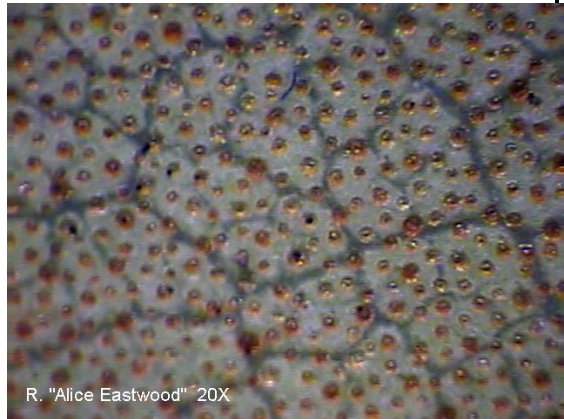
This month's word is **LEPIDOTE**. It's from the Greek, *lepidos*, scale. The word appeared in the newsletter about two years ago, but I'm repeating it in a different context because of the upcoming Rhododendron Show April 23, 24 and 25. In the show, the first three classes (Rhododendron species, hybrids and plants) are grouped according to whether they are **lepidote** or **elepidote**. That's because there are two great groups of rhodies that are genetically quite distinct from one another.

One group is called **lepidote** because its members have scales on the undersides of the leaves. Scales on the underside of a leaf from R. "Alice Eastwood" are shown in the top illustration. You can see them without magnification but a low power magnifier will show them clearly. Generally the **lepidotes** have smaller leaves, though there are exceptions. Nearly all of the fragrant rhodies are **lepidote**.

Well over three quarters of the Rhododendron plants we have in our yards are **elepidotes**. Rhodies in this group have no scales on the undersides of the leaves. The middle illustration shows the underside of a leaf from R. "Ivory Ruffles". Notice that there are no scales present. **Lepidotes** are not very cold-hardy and cannot be grown in much of the country, thus most hybrids on the market are **elepidotes**.

The visible distinction when you are entering your flowers in the show next month (hint, hint) can be a problem. R. "Ivory Ruffles" which has a smooth surface on the underside of the leaf. It is said to be **glabrous** (Latin, *glaber*, bald or smooth). Many rhododendron leaves are **hirsute** (Latin, *hirtus*, hairy or bristly). The plants have varying amounts of "hair" on the bottom of the leaf. We rhodie folks call the fuzz **indumentum**. The bottom illustration shows the underside of a leaf from R. "Vulcan". Widely scattered hairs are visible. Often the indumentum is very thick and attractive; some of us buy rhodies specifically for their indumentum. It can be confused with scales, but if scales are present they are distinctly rounded and not hair-like even to the unaided eye.

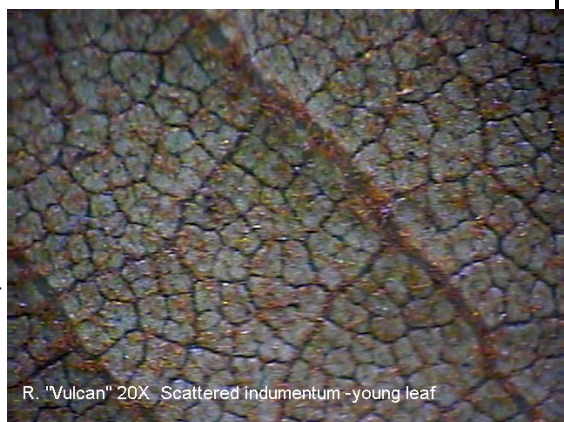
When you bring your Rhododendron trusses, sprays and plants to the show next month, don't get spooked about these categories. There will be help available to assist you with placement. **Please, please, please bring flowers to the show so the general public can appreciate the wide variety of beautiful rhodies we grow here in "Rhododendron Central".**



R. "Alice Eastwood" 20X



R. "Ivory Ruffles" 20X glabrous underleaf



R. "Vulcan" 20X. Scattered indumentum - young leaf

**Mark your calendars, Humboldt Botanical Garden
Plant Sale Sunday May 23 rd 11 to 3**



Plant of the Month

Rhododendron 'Coastal Sugar'

By Don Wallace

It has been about 10 years since Jim Gerdeman of Yahats, Oregon gave me cuttings of his cross (Rhododendron 'Fragrantissimum' x Rhododendron burmanicum) x Rhododendron edgeworthii. There were 5-6 different sister seedlings that he selected as being worthy of naming and registering. We grew some of each selection. We picked out what we felt to be the best for flower color, fragrance, and plant habit, and named it "Coastal Spice" as Jim had wanted. One was planted in our

display garden, and for years since we have propagated and sold them with this name.

Well, a couple of years ago Jim contacted me and suggested that we had named the wrong sister seedling. He sent cuttings of the selection he wanted with the name 'Coastal Spice'. So we honored his request, but were then wondering what to name the selection we liked best. Our good friend Steve Hootman of the Rhododendron Species Botanical Garden suggested we call it 'Coastal Sugar', and that is exactly what we did. As it will be in bloom soon, we are making it the plant of the month. This plant will do fine in full sun or some shade, will grow to 4-5 ft. tall in 10 years, and will bloom in late March, or early April. It is so fragrant that on a warm day you can smell it 20 ft. away. The foliage is a shiny dark green that holds for at least 2 years, making a handsome shrub. Fuzzy new growth emerges after flowering, adding to the plant's interest in the garden.

Flower Show Classifications:

- Class 1: Species, trusses and sprays
- Class 2: Hybrids, trusses and sprays
- Class 3: Rhododendron plants, species and hybrids
- Class 4: Azalea plants, species and hybrids
- Class 5: Azalea trusses, sprays, hybrids
- Class 6: New hybrids, plants and trusses
- Class 7: Fragrant rhododendrons
- Class 8: Arrangements
- Class 9: Photographs
- Class 10: Educational Display
- Class 11: Bonsai rhododendrons

It is not too early to start making plans for the Rhododendron flowers, photographs, arrangements, plants and Bonsai that you hope to enter in this year's show **April 23—25**. Review the list to the left and start putting your to-do list together. If you are entering photos remember that they should be matted but not frames, you may want to protect certain buds from rain the week before the show. If you are going to enter an educational display, start now so that you won't feel like you have a grade school child's project to complete at the last minute. You might even be able to find the names of some of the flowers you want to enter, although you may always just enter by color. Have fun and share the fun by bringing your flowers to the show.



Eureka Chapter is published monthly except during July and August. Submissions from members are encouraged and should be mailed to June Walsh, Bulletin Editor, 2050 Irving Drive, Eureka, CA 95503-7022. Membership information and applications are also available from June Walsh. Eureka Chapter is a member of the Humboldt Botanical Gardens Foundation, Eureka, Calif., and The Rhododendron Species Foundation, Federal Way, Wash. Eureka Chapter is a chapter of the American Rhododendron Society.

Eureka Chapter

Eureka Chapter/American Rhododendron Society
2050 Irving Drive
Eureka, CA 95503-7022

*I have a garden of my own
Shining with flowers of every hue;
I loved it dearly while alone,
But I shall love it more with you.*
Thomas Moore

Future Programs

Thursday March 25, 2010 7:00 p.m.
Thursday April 22, 2010 7:00 p.m.
April 23 through April 25, 2010
Sunday May 23

Gary Todoroff, Garden Photography TBA
Fred Whitney, Great Gardens visited
Rhododendron Show and Plant Sale
**Humboldt Botanical Garden, Temperate
Woodland Garden dedication and Plant Sale**
Pizza and Mini Show
Garden Tour and Potluck Picnic

Thursday May 27, 2010 6:30 p.m.
Sunday June 13, 2010

New meeting Location. We will be meeting at the Woman's Club at 1531 J Street in Eureka unless otherwise announced. Programs are subject to change.

Eureka Chapter Officers and Board Members September 2009 to June 2010

Betty Bottemiller, President	707-822-4935	bbbettybotts@gmail.com
Tim Walsh, Vice President	707-443-0604	timwalsh1@suddenlink.net
Trish Ortiz, Secretary	707-822-3330	tgiddingortiz@gmail.com
June Walsh, Treasurer, Membership, Newsletter	707-443-0604	RhodyHostel@suddenlink.net
Don Wallace, Programs	707-839-8777	donw@singtree.com
Bruce and Nelda Palmer, Show Co-Chairs	707-443-8049	bnpalmer@northcoast.com
Ellie Gayner, Publicity	707-443-1291	egayner@hotmail.com
Jerry Reynolds, Director	707-822-6580	jerry_reynolds@suddenlink.net
Doug Batt, Director	707-444-2702	dbattspot@sbcglobal.net