

## AMERICAN RHODODENDRON SOCIETY

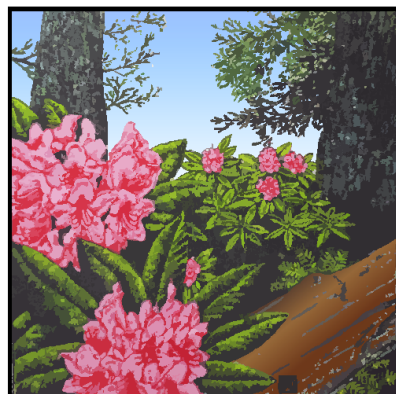
### *Eureka Chapter*

#### *The next meeting*

Thursday January 28, 7:00 p.m.  
Woman's Club  
1531 J Street  
Eureka, California

#### *Pre-Meeting No Host Dinner 5:15*

Kyoto, 320 F Street, Eureka  
**Fixed price \$20**  
**RSVP, Nelda, 707-443-8049**  
*so there will be enough seating and food*



Eureka Chapter  
American Rhododendron Society

Rhododendrons  
in the Redwoods

## 2016

## *Japanese Garden Design*

*The Eureka Chapter of the American Rhododendron Society will meet on Thursday, **January 28, 2016** The meeting and program will be held at the Eureka Woman's Club 1531 J Street in Eureka beginning at 7:00 P.M. Kyoto will choose a menu for us for a fixed price of \$20 per person. Be sure to call Nelda (443-8049) for your reservation so there is enough seating and food.*

Paula Trinoskey, a Eureka Chapter Bronze medal honoree, will give a program about Japanese Garden Design. With pictures taken by Verne, also a Bronze medalist, during their trips to Japan, Paula will introduce some techniques that make Japanese gardens unique and so appealing to our eyes.

Paula and Verne recently returned from Japan where the fall colors added another dimension to the gorgeous gardens of Japan. Six hundred years of design and construction have resulted in gardens with an appeal that resonates with an inner part of our being. We are fortunate to live here on the North Coast where we can also benefit from the centuries of thought and work. Everyone can have a taste of Japan in their garden, and this talk will serve as a travelogue and present some ideas that you can use in your garden.

Paula will discuss various gardens in Kyoto, with a peek at Kenkouren in Kanazawa where they were readying the trees for the snowy winter.

CDs of all of Verne's photos will be available for \$7. There will be a sign-up sheet.



*Photos are those of the Newsletter editor, June Walsh, unless otherwise noted. Permission is granted to reprint any portion of this publication provided credit to the author and Chapter is given.*

R. 'Lady de Rothchild'



**Plant of the Month:**

**R. 'Lady de Rothchild'**

*By Don Wallace*

Here is an old timer that is really worth having. Hybridized by the Waterer Nursery (Knaphill) of Surry, UK, in 1925, this plant is still in production today because it is a superior plant. Growing to 5 ft. tall and 6 ft. wide in 10 years, the plant is quite elegant in form and stature, having dark-green leaves that gracefully arch from

the stems. The flowers are also an elegant white with rose-pink edges and a big crimson blotch, in perfect ball trusses. If you have ever seen this plant in full bloom you would agree with me that it is the 'perfect' rhododendron, being one of the best to represent the genus. Awarded the Award of Merit by the Royal Horticulture Society in 1952.

## **Eureka Chapter will host American Rhododendron Society 2017 International Convention**

Mark your calendar now for **April 27 through, 30 2017** for the American Rhododendron Society's annual spring Convention. The Eureka Chapter will host the convention which will bring visitors to world famous Humboldt County from across the nation, Canada, and around the world.

For many seeing the Redwoods (*Sequoia sempervirens*) is high on the must see 'bucket list', as is the rugged North Coast of California with its *Rhododendron macrophyllum* and *Rhododendron occidentale*.

The Red Lion will be our host hotel with a wonderful rate of \$99 per night per room for the duration of the convention with that rate being extended for visitors coming before or staying after the convention. The rate will include airport shuttle and breakfast. In addition to the hotel's restaurant there are many restaurants within easy walking distance.

The new Sequoia Conference Center, three blocks from the Red Lion Hotel, will be our meeting and banqueting venue. Visitors can walk to the conference center or drive as there is plenty of off-street parking.

The Convention Committee is working on getting world-class speakers and having tours to highlight the natural beauty of Eureka and Humboldt County as well as public gardens, private gardens and nurseries.

The Chapter will be calling on members to volunteer, sponsor speakers and lead tours. Become involved and help share our piece of heaven with the world.







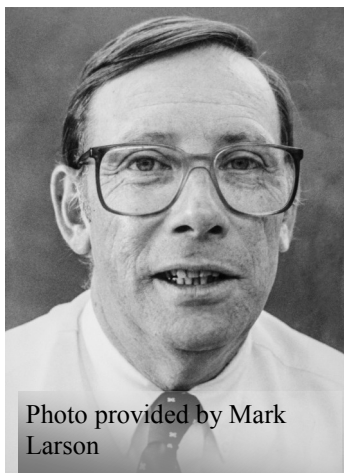


Photo provided by Mark Larson

We lost our Rhodo-holic friend and Chapter President Jerry Reynolds on November 17, 2015. He was never able to fully recover after his car accident in May 2015 and over the last few weeks of October and November declined further. He had been in St. Joseph Hospital ICU where he lost the fight, which, in the end turned out to be lung cancer.

We, and others, visited him nearly every day as did many other Rhodo friends; his nurses said you must all be rhododendron people! I think that is a pretty nice way to be known.

June Walsh remembers, "In August 2003 Jerry called to offer congratulations on my recent retirement from a business I had owned for 34 years. And, he asked if I would be willing to become his apprentice Eureka Chapter newsletter editor. Jerry was a man of such gentle persuasion that one could not decline. His teaching style was to help one understand the tools (in this case Microsoft Publisher) then let you practice until you got stuck at which point he would give a new tool that you previously did not know you needed. Brilliant. September 2003 was my first co-edited Eureka Chapter newsletter.

Over the last few years Jerry and I met most Tuesday mornings at Humboldt Botanical Garden's Moss Family Temperate Woodland Garden as part of the Wild Weeders and Grateful Deadheaders team. After our obligatory gardening we would share a bench and sack lunch and Jerry would tell of his recent world travels or visit to the San Francisco or the Eureka Symphonies."

As you can see from the pictures on the previous page Jerry Reynolds helped us all celebrate and honor Chapter members over many years who were awarded Bronze Medals. He always wanted to be sure that the Chapter acknowledged those who worked to make the Chapter vibrant and useful to its members. He, too, was recognized with the Chapter's Bronze medal and the Humboldt Botanical Garden's Volunteer of the Year (top right photo) for being a very reliable Wild Weeder and Grateful Deadheader. He was on the organizational committees which put on the 1993, 1999 and 2007 conventions hosted by the Eureka Chapter.

Bruce Palmer remembers Jerry, "The first time met Jerry Reynolds was at a flower show at the Eureka Inn a bit more than twenty years ago. It was clear at that time that he was a quiet, competent leader. As I got to know Jerry better over the years I found out why. When I was at Cal I needed to live in the Co-op to be able to afford college. I learned that Jerry had done likewise and that he had served as President of the Cooperative Association. That was quite a leadership accomplishment, given that there were six Co-op dorms housing a total of more than three hundred students and the President is elected. That ability to assume leadership without being overbearing is a rare trait. Jerry had it. Jerry was an excellent writer, as would be expected from his journalism background. He constructed the original flower show book, based on what the Portland Chapter published but tailored to our needs. He always wrote the citations for the chapter's bronze medal awards. Jerry's computer expertise is probably the primary thing that pulled the chapter into the computer age. The chapter will survive without Jerry, but it will take some time for many of us to recover from his untimely demise. We miss Jerry greatly."

Emeritus Professor Mark A. Larson former head of Humboldt State University's Journalism Department had this remembrance; "Jerry and I had shared a farewell and said good bye a few days earlier (he was very restricted in talking except for a few minutes due to his breathing issues). The doctors were searching for why the lung issues (expecting a link to his summertime car accident) and also discovered lung cancer (Jerry had smoked for many years).

Jerry taught these and other classes for us for many years: JMC 326-Investigative Reporting, JMC 322-Editing, advised *The Lumberjack* workshop, and others. I was just telling my wife that Howard Seemann probably would have been unwilling to pass on *The Lumberjack* adviser role to anyone other than Jerry. Jerry became an expert I.T. person with all things Macintosh computers and printers and was a person I relied on for that expertise, as well as his skill and abilities to teach our journalism classes and advise *The Lumberjack* newspaper.

Jerry was a long-time newspaper journalist and worked as major southern California newspaper editor prior to "retiring" to Arcata. We were lucky to talk him into joining our part-time lecturer staffing at that time. He also worked part-time for some years at The Times-Standard in the newsroom, primarily writing editorials, and was an active gardener and active participant in the local rhododendron society, and more recently, active with the Humboldt Botanical Garden at College of the Redwoods." *continues on Page 6*

## WORD OF THE MONTH – PIGMENT

By Bruce Palmer

Last May after the flower show I chose anthocyanin as the word because of its importance in determining flower color and in coloring new leaves in spring and old ones in autumn. Anthocyanins are only one of a number of molecules that absorb and reflect colors in plants, so this month let's discuss some of the other **PIGMENTS** in leaves. The word **pigment** descends to us directly from Middle English and is derived from the Latin *pingere*, to paint.

At this time of year, most of the **pigments** associated with flower and leaf color are absent or not obvious. **Chlorophyll** (Greek *chlros*, green, and *phyllon*, leaf) still shows in plants with evergreen leaves such as most of our rhododendrons (Figure 1 shows *Rhododendron macabe anum* working away last week). The **pigments** we call **chlorophylls** (there are about six different **chlorophylls**, only two of which are present in flowering plants) are still busy absorbing the colors of light at each end of the spectrum to produce chemical energy for the plant in the process we call photosynthesis. Chlorophylls reject green light, reflecting it so that we see green leaves.

**Chlorophylls** don't act in isolation. Accessory **pigments**, sometimes called antenna molecules, capture light energy and transport it to the chlorophyll molecules. **Xanthophyll** (Greek *xanthos*, yellow, and *phyllon*, leaf) is a yellow accessory pigment and **Carotene** (Latin, *carota*, a carrot) is orange. Both are accessory pigments to **chlorophyll**. Both **xanthophyll** and **carotene** are in a group of pigments called **Carotenoids**. They are present in leaves but don't show as long as the leaf is healthy because they are far outnumbered by **chlorophyll** molecules.

Deciduous plants recycle their **chlorophyll** as the days get shorter and colder. As the **chlorophyll** disappears the **pigments** that helped **chlorophyll** capture light remain behind. They give us most of the yellow and orange leaf colors in the fall. Some plants, though, have red leaves in the fall. The red is from **anthocyanins**, produced in the autumn to ward off damage from the remaining sunlight as the plant is reclaiming the last remnants of useful molecules and sending them to the stems and roots for winter storage. Figure 2 shows Japanese maple leaves fallen in autumn. The yellow leaves have mostly **xanthophyll**, the orange ones mostly **carotene**, the red ones mostly **anthocyanin**. The green leaves belong to perennial herbs still working away in spite of cool, short days.

So, here we are in "Rhododendron Central", in the middle of the rainy season in what appears to be a normal rain year. The recent rains have stripped nearly all the leaves from the deciduous trees. Our rhodies, though, are still at work producing molecules that can be used in about three months to give us our fabulous blooms. Judging from the developing buds, it should be a great flower season.

Figure 1: *Rhododendron macabe anum* carrying on photosynthesis in winter.

Figure 2: Japanese Maple leaves on the ground Showing xanthophyll, carotene and anthocyanin





Eureka Chapter/American Rhododendron Society  
2050 Irving Drive  
Eureka, CA 95503-7022

Eureka Chapter is published monthly except during July and August. Submissions from members are encouraged and should be mailed to June Walsh, Bulletin Editor, 2050 Irving Drive, Eureka, CA 95503-7022. Rhodyhosh-tel@suddenlink.net Membership information and applications are also available from: Ellen Gill (Htg1ander@ suddenlink.net) Eureka Chapter is a member of the Humboldt Botanical Gardens Foundation, Eureka, Calif, and The Rhododendron Species Foundation, Federal Way, Wash. Eureka Chapter is a chapter of the American Rhododendron Society.

## Eureka Chapter

### Future Programs

**January 28, 2016, Paula Trinoskey, Fall Color in Japan**

**February 25, 2016, Dennis McKiver, Growing Show Quality Rhododendrons**

**March 24, 2016, Gisele Schoniger, Soils**

**April 28, 2016, To be announced**

**April 29 to May 1, 2016 Rhododendron Show and Plant Sale**

**May 26, 2016 IN-House Mini Show...win BIG BUCKS when you show us your bloomers**

**June 5, 2015, Member Garden Tour and Potluck Picnic**

Put these dates on your calendar now so you won't miss any of these great programs. Watch for the Eureka Chapter Newsletter for more info.

*Remembering Jerry Reynolds, continued...*

Sonja Nelson former American Rhododendron Society Journal editor said, "He contributed a lot to the ARS. He helped me with journal layout when I was getting started."

Jerry was also the Publicity Committee Chair for the ARS. He worked with national publications to get the Rhododendron of the Year for each ARS district publicized in newspapers and magazines.

Lucy Johnson from Noyo Chapter in Fort Bragg where Jerry judged many shows over the years remembered, "Jerry was a very kind man, when we came up to Eureka he would always come over say hi and welcome us with open arms. We are very sorry to hear of his passing. We know that he will be missed in your chapter and to those who knew him as friend."

**"Friends feed each other's spirits and dreams and hopes; they feed each other with the things a soul needs to live" \*Glen Herrington-Hall**

**Jerry did this for us.**

*Compiled by June Walsh, apprentice newsletter editor*

### Eureka Chapter Officers and Board Members

For board member contact information or if you are interested in attending a board meeting, call or email June Walsh 707-443-0604