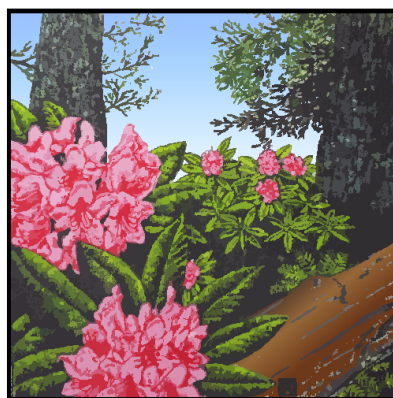


## Eureka Chapter

*The next meeting  
Thursday May 25th, 6:00 p.m.  
Woman's Club  
1531 J Street  
Eureka, California*

*Garden Tour and Picnic  
Sunday June 4th  
See info on  
Page 8*



Eureka Chapter  
American Rhododendron Society

Rhododendrons  
in the Redwoods

**May and June  
2017**  
*Mini Show and  
Garden Tour  
Edition*

**Members' Mini Show**  
***Let us See Your  
Bloomers!***

### ***SHOW US YOUR BLOOMERS***

***Eureka Chapter Mini-Show and Potluck Party***

***Thursday, May 25th at 6:00 p.m.***

***The Thursday May 25th meeting of the Eureka Chapter will be the annual Mini-Show. YOU get to be the judges! For all the efforts you put into cutting and grooming your entries you will be rewarded with Potluck!***

***Bring your favorite main dish, side dish, salads and desserts to share with your fellow members. The meeting will start at 6:00 so there will be time to fill out the entry tags for your 'Bloomers' and to place them on the show tables. Everything will be provided, all you need to do is bring your flowers, your sense of humor, your potluck dish and a good appetite.***

***There will be a Judging Rhodo 101 show-and-tell explaining what to look for in blue ribbon winners as you select your favorite entries. The prizes are \$100 for the Blue Ribbon winner selected as Best of Show and \$25 for all other Blue Ribbon winners, so it is well worth scouring your garden for a flower for one each of the 9 classes. See page 2 for rules and classes.***

*Photos are those of the Newsletter editor, June Walsh, unless otherwise noted. Permission is granted to reprint any portion of this publication provided credit to the author and Chapter is given.*

## Eureka Chapter Mini-show Rules

Show Date: Thursday, May 25th

This mini-show takes place at the May 26th meeting. Entries are limited to those of members (Life, Regular, Associate, etc.) of the American Rhododendron Society's Eureka Chapter.

All exhibits must have been in the member's garden for at least six months before the show.

Members are limited to **one entry in each class**. Entries must be rhododendron trusses. No sprays or hammerheads will be judged. There is no class for azaleas.

Entries are based largely on color, but members are encouraged to include the name of the species or hybrid on the entry card for the benefit of other members. Trusses may be groomed and prepared according to the rules for the regular Eureka Chapter Truss Show and Plant Sale.

Classes shall consist of the following:

Class 1: Lepidote Rhododendron Species, regardless of color. (These include the Maddenii and most small-leaved rhododendrons.)

Class 2: Elepidote Rhododendron Species, regardless of color.

Class 3: Hybrid Rhododendrons, Red.

Class 4: Hybrid Rhododendrons, Pink.

Class 5: Hybrid Rhododendrons, White.

Class 6: Hybrid Rhododendrons, Purple, lavender or blue.

Class 7: Hybrid Rhododendrons, Yellow, orange or apricot.

Class 8: Hybrid Rhododendrons, Bicolor.

Class 9: Any Rhododendron truss entered for fragrance.

Judging shall be done by the members and guests attending the show. Each member and guest shall receive a ballot and may vote for one truss in each class by writing the entry-tag number on the ballot. Ties shall be broken by a member randomly selected by the show chair to cast a tie-breaking vote.



Once a winner has been selected in each class, members and guests will vote for the Best of Show on the Best of Show Ballot from among the first-place winners in each class.

**Awards: The Best of Show entry shall receive \$100;  
all other blue-ribbon winners shall receive \$25 each.**





District 5 Director Tim Walsh presents the ARS Silver Medal to Don Wallace, *Photo by Glen Jamieson*

## Eureka Chapter Member, **Don Wallace** received the **ARS Silver Medal**

His citation reads, “Over the past 27 years Don has planted, propagated, and grown from seed many rhododendrons. He has hybridized rhododendrons for fragrance, as well as new and exciting colors of flowers. His hybrids are plants for all seasons as he chooses plants that hold their leaves more than one year, creating fuller, more attractive plants when not in bloom.

Don has been invited to give his excellent programs with beautiful photography of gardens, flowers and plants to chapters from Washington to Central California. He has generously shared his knowledge with all who are interested.

His articles have been featured in the *Journal of the American Rhododendron Society*.

For these significant and lasting contributions the American Rhododendron Society is proud to award the Silver Medal to Don Wallace. [This 30th Day of April, 2017](#)

## **Plant of the Month: R. ‘May Day’** *By Don Wallace*

What better choice for May’s Plant of the Month. Rich red-orange bells cover the plant in May, making a festive look in the garden. The plant grows wider than tall and will be 5 ft tall and 8 ft wide in 10 years. The foliage is a very nice dark green with a dusting of indumentum on the undersides. The leaves hold for 2-3 years making it a full and lush plant. The bloom is quite long, 3-4 weeks, and is always noticed by our customers. Plant with ‘Blue Lagoon’ or ‘Royal Purple’ for a show you won’t forget.



Photo from [www.hirsutum.info](http://www.hirsutum.info)





ARS Web Master Bob Weissman presents Dee Daneri with the ARS Gold Medal, Photo by Glen Jamieson

## Eureka Chapter Member Dee Daneri Honored with ARS Gold Medal

The Citation Reads:

Deanna Daneri helped bring the American Rhododendron Society into the modern age with her advocacy for communicating with Chapters, members and the public through the World Wide Web. In 2000 the ARS became accessible to the world through Dee's gentle yet persuasive guidance and choice of key members who were able to bring the vision to fruition.

Dee's interest in the American Rhododendron Society has not waned since her retirement as Executive Director; she has been the Honors Committee Chair for many years. She has been the Rhodo enthusiast who brought Vireya Rhododendrons to Valarta Botanical Garden in Puerto Vallarta, Mexico.

Dee has worked tireless for the American Rhododendron Society, her work and ongoing enthusiasm has earned her the appreciation of many ARS members.

For these significant and lasting contributions the American Rhododendron Society is proud to award the Gold Medal to Deanna Daneri. This 30th day of April, 2017.



Left to Right, Mary Lou Goodwin, Mark Freitas, Maria Krenek and June Walsh work to clear brush and weeds from Azaleas at Stagecoach Hill near Big Lagoon at the end of Kane Road. Best blooming time is the first week of June.





Fred Whitney, Mary Lou Goodwin and Ann Whitney, Photo by Chuck Goodwin

On Saturday April 30, 2017 during the ARS Convention held in Eureka, Mary Lou Goodwin, Chairman of the California Garden Clubs, Inc. Stagecoach Hill Azalea Propagation Project received a generous donation from Fred and Ann Whitney of Kent, Washington. Fred is a Past President of the American Rhododendron Society. The donation was made in the memory of

Britt and Jean Smith (of the Smith-Mossman Azalea expeditions).

The Stagecoach Hill Azalea Propagation Project is to help provide funding to propagate 300 azaleas (*Rhododendron occidentale*) from cuttings and from seed, to be planted in two or three years in the State of California Management area in Humboldt County on Kane Road north of Trinidad.

This donation was announced as a Challenge Grant, to begin building funding for completion of the propagation project. Eureka Chapter members making donations include: Tom and Maria Krenek, Tim and June Walsh, Bruce and Nelda Palmer, Mark and Devon Freitas, Chuck and Mary Lou Goodwin. Mike McCullough of Monterey Chapter and Red and Karen Cavender of Portland Chapter have made donations to the project as well.

The project is headed by Dan Burgess of California State Parks working at the Mill Creek Nursery in Crescent City. The project is funded through the Redwood National Parks Foundation.

Also at the April 30<sup>th</sup> convention banquet Fred Whitney was awarded the Gold Medal of the American Rhododendron Society for his many years of service to the society.

### **Nominations for Eureka Chapter Officers and Board Members September 2017 to June 2018**

The Eureka Chapter will elect board members at the May 25<sup>th</sup> meeting. The below slate will be up for your vote in addition to any nominations from the floor.

#### **Board Nominations:**

President: Max Abrahamsen

Secretary: Gail Ledbetter

Past President: Eleanor Gayner

At Large: Diane Larkin (Volunteers)

At-Large Margaret Cole (In-House Show)

Vice President: Nelda Palmer

Treasurer: Tim Walsh

At-Large: Sue Hemmann (Hospitality)

At-Large Don Wallace (Programs)

#### **Standing Committees**

Flower Show: Open

Newsletter: June Walsh

Membership: Ellen Gill



## WORD OF THE MONTH - TRUSS

The highly successful ARS National Convention is behind us and we can all be proud of what we accomplished under the fabulous leadership of our chair June Walsh. The flower show, though abbreviated by space restraints was great. Now it is time to look ahead to next week when we have the members only flower show, so this month's word is **TRUSS**. I used that word a few years ago, but it bears repeating, given that many of our newer members might not know that's what we call most of our rhodie flower groupings. Besides, we should all be thinking about what trusses

we will bring to the show. The word is from the Old French *trousser*, to pack into a bundle. In botany it does not mean something that holds up a bridge or a hernia or is related to the Thanksgiving turkey when it's ready for the oven, nor is it related to trousers, which comes from the same root. Botanists use a variety of terms to describe how flowers are held in groups, including spikes (as in foxglove), umbels (as in fennel and dill), panicles (as in Delphinium), catkins (as in willow), and heads (as in sunflowers). If a plant bears its flowers in trusses, there are groups of fairly large flowers whose buds are packed in a bundle at the end of a branch, referred to as a terminal inflorescence rather than a truss in the current Royal Horticultural Society Rhododendron Handbook. The photo of *Rhododendron liliiflorum* shows how the developing flowers are packed into a terminal truss before they open fully. The truss is classed technically as a raceme (Latin for a bunch of grapes). An open truss doesn't look like a bunch of grapes, but when you deadhead the spent stem, the rhachis (Greek for spine), looks like what is left over after you ate the grapes. Despite the resemblance, grapes don't bear their flowers in racemes; grape inflorescences are called cymes.

Not all members of the genus *Rhododendron* bear their flowers in trusses, but almost all of the rhodies we have in our yards are in the subgenus *Hymenanthus* (Greek: hymen, a membrane and anthos, a flower), all of whose members bear trusses. Because of that, most of the rhodies in our flower shows are in trusses. We've gotten away from calling our shows truss shows, partly for public relations reasons. Flower show is probably better, given that the viewing public isn't familiar with the term in its botanical context and not all of the displays are trusses. With or without trusses, the season is here when we can go out every day to enjoy the many members of the genus *Rhododendron* showing off in our gardens. With or without extensive member participation the show will go on, but in the past we have had very high percentages of member entries.. Please remember to save May 25 for the big event. Bring flowers for the show and food for the potluck. We always have a great time.

**"A friendship can weather most things and thrive in thin soil; but it needs a little mulch of letters and phone calls and small, silly presents every so often- just to save it from drying out completely". Pam Brown**

## Convention Flower Show and Photo Show Winners

**Joe and Trish Ortiz** were in charge of the **Photo Show** during the 2017 ARS Convention held in Eureka. The judging for both shows was done by convention attendees and the public. The winners were;

### Category 1: Flower, truss or spray

First Place: **Jack Olson**, *Rhododendron yuefengensie*

Second Place: **Ali Sarlak**, *Rhododendron* 'Taurus'

Third Place: **Dave Eckerdt**, *Rhododendron yakushima X pachysanthum*

### Category 2: Landscape or plants in the wild or garden

First Place: **Linda Derkach**, Forest reflected in water

Second Place: **Jack Olson**, *Rhododendron* 'Taurus'

Third Place Tie: **Linda Derkach**, Trees and Rhododendrons

**Nelda Palmer**, Garden Gnome

### Category 3: People, insects or animals

First Place: **Jack Olson**, Frog

### Category 4:

First Place: **Dave Eckerdt**, Wine and Roses

Second Place: **Jack Olson**, Red leaves with rain drops

Third Place: **Ali Sarlak**, *Rhododendron calophytum*

**Paula and Richard Grabowski** were in charge of the **Flower Show** during the 2017 ARS Convention held in Eureka. The winners were;

**Class 1:** Any Lepidote Rhodo species, regardless of color, *R. trichostomum*, **Nelda Palmer**

**Class 2:** Any Elepidote Rhodo species, regardless of color, *R. macrophyllum*, **Dennis McKiver**

**Class 3:** Any hybrid Rhodo, Red, *R. 'Black Magic'*, **Dennis McKiver**

**Class 4:** Any hybrid Rhodo, Pink, *R. 'Mrs. G. W. Leak'*, **David Anderson**

**Class 5:** Any hybrid Rhodo, White, *R. 'Schnee Krone'*, **Joe Ortiz**

**Class 6:** Any hybrid Rhodo, Purple, Lavender or Blue, *R. 'Black Sport'*, **George and Kathy Burtchett**

**Class 7:** Any hybrid Rhodo, Yellow, Orange or Apricot, *R. 'Tahitian Dawn'*, **Dennis McKiver**

**Class 8:** Any hybrid Rhodo, Bicolor, *R. 'Elsie Watson'*, **Dennis McKiver**

**Class 9:** Any Rhodo truss entered for fragrance only, *R. 'Loderi King George'*, **Richard and Paula Grabowski**

**Class 10:** Any Azalea, species or hybrid, regardless of color, Exbury Hybrid, **Dennis McKiver**

**Class 11:** Any Vireya, species or hybrid, regardless of color, *R. 'Masquerade'*, **UNK**

### Best of Show;

**'Elsie Watson',  
Dennis McKiver**

	<b>Imagine the Possibilities.</b>	
	<b>Mollie Smith</b>	Digital Copiers
	P: 707-445-3095	Printers
	F: 707-445-8743	Fax
	mollie@coastal-business.com	
<b>COASTAL BUSINESS SYSTEMS</b>	336 First Street Eureka, CA 95501	www.coastal-business.com Eureka Redding Chico

Thank you Mollie Smith and Coastal Business Systems for doing our Newsletter printing for our non-computer users. Mollie also printed our Convention 2017 color brochures and Tour info.



Eureka Chapter  
American Rhododendron Society  
in the Redwoods



Eureka Chapter/American Rhododendron Society  
2050 Irving Drive  
Eureka, CA 95503-7022

Eureka Chapter Newsletter is published monthly except during July, August and November. Submissions from members are encouraged and should be mailed to June Walsh, Newsletter Editor, 2050 Irving Drive, Eureka, CA 95503-7022. Or by email [RhodyHostel@suddenlink.net](mailto:RhodyHostel@suddenlink.net) Membership information and applications available from Ellen Gill. [Higlander@suddenlink.net](mailto:Higlander@suddenlink.net) Eureka Chapter is a member of the Humboldt Botanical Gardens Foundation, Eureka, CA and The Rhododendron Species Botanical, Federal Way, WA. Eureka Chapter is a chapter of the American Rhododendron Society a 501 (c) (3) charitable organization.

[www.EurekaRhody.org](http://www.EurekaRhody.org)

## Future Programs

**May 25, 2017 at 6:00 P.M. IN-House Mini Show...WIN BIG BUCKS when you show us your bloomers**

**June 4, 2015, Members and Guests, Garden Tour and Potluck Picnic, Stagecoach Hill Azalea Reserve and Singing Tree Gardens Nursery**

### Potluck Picnic– Garden Tour Sunday June 4th

The Eureka Chapter will have its annual Member Garden tour beginning at Stagecoach Hill Azalea Reserve and ending at Singing Tree Gardens Nursery for potluck picnic.

Meet at Stagecoach Hill at 12:30 P.M. (101 north to Kane Road, turn right and then left at the 'T' in the road to parking area in the trees).

Leave Stagecoach Hill, to go to Singing Tree Gardens Nursery to be there by 2:00 P.M. (101 south to Crannell Road, turn left over the freeway, at the 'Y' take Dow's Prairie Road up the hill, Singing Tree is on the left).

This will be a potluck picnic so bring what you do best to share. We will set up tables for the food and have plates and utensils. Members and guests are invited to bring chairs or blankets to enjoy the food and friendship on the lawn. Eureka Rhody members are encouraged to bring your family and friends and anyone who you think should become a member of the Eureka Chapter.

**If you have any questions please call June 707-443-0604**

### Eureka Chapter Officers and Board Members

For board member contact information or if you are interested in attending a board meeting which are held the first Wednesday of the month at 7PM, call or email June Walsh 707-443-0604