

## AMERICAN RHODODENDRON SOCIETY

# Eureka Chapter

***The next meeting***  
*Thursday April 26, 7:00 p.m.*  
*Woman's Club*  
*1531 J Street*  
*Eureka, California*

*Pre-Meeting No Host Dinner 5:15*  
*Kyoto, 320 F Street, Eureka*  
*Family Style \$24 Tax & Tip included*  
***Call Nelda, 707-443-8049***  
*For a reservation **REQUIRED***



*Eureka Chapter  
American Rhododendron Society*

*Rhododendrons  
in the Redwoods*

## April 2018

## Passage to Persia

***The Eureka Chapter of the American Rhododendron Society will meet on Thursday, April 26, 2018. The meeting and program will be held at the Eureka Woman's Club 1531 J Street in Eureka beginning at 7:00 P.M.***

The Eureka Chapter April program will be presented by Ali Sarlak. He is originally from Iran (Persia). Ali says, "I am sure we all been hearing on the news at least the name Iran, but you might see and get a different prospect of my birth country after my talk."

Ali has been living in Corvallis, Oregon almost 40 some years,. He is a landscape contractor, with a very small operation, most of time only himself running the business. He enjoys his line of work and the freedom, it allows for travel when is possible. He became interested in rhododendrons while in Corvallis. He has an been an active Eugene Chapter member and was the Chapter President for one term.

Ali will tell a little about why he traveled to Iran. Since he was a child he carried memories about how beautiful the mountains of Iran were with alpine flowering plants. As an adult with more plant knowledge he decided that he wanted to visit and get view of the mountains and the plants. He traveled with a tour company based in England. The year he traveled the mountains had good snow fall so plants were exceptional. Many of the plants he saw are only found in that region of Iran.



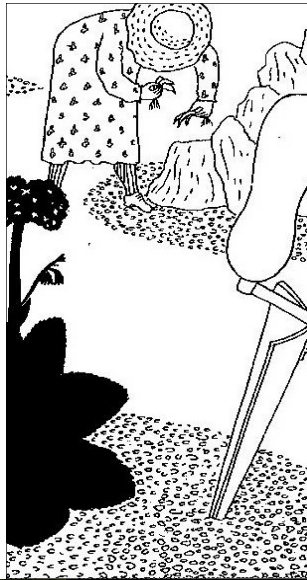
Ali says, "To my eyes: The landscape, geology, geography, scenery, culture, history and people were fascinating and I am sure the people in our group were both pleased and not disappointed."

Ali promises to give us a beautiful trip to the land of his birth.

*Photos are those of the Newsletter editor, June Walsh, unless otherwise noted. Permission is granted to reprint any portion of this publication provided credit to the author and Chapter is given.*

On the first day of springtime,  
My true love gave to me  
Five packs of seed\*,  
Four sacks of fertilizer\*,  
Three cans of weed killer\*,  
Two bottles of insect spray\*,  
And,  
A pruning knife for the pear  
tree.

*\*Organic and environmentally friendly, of course!*



When I go into the garden  
with a spade, and dig a bed,  
I feel such an exhilaration  
and health that I discover  
that I have been defrauding  
myself all this time in let-  
ting others do for me what  
I should have done with my  
own hands. -Ralph Waldo  
Emerson, writer and  
philosopher (1803-1882)



#### ONLINE SHOPPING AND THE ARS STORE A REMINDER TO HELP FUND THE ARS

Anytime you shop online for just about anything, please consider first going through the American Rhododendron Society Online Store. The ARS Online Store is reached by the link:

<http://arsstore.org/> **Book Mark it!**

On this site you will find a very wide range of merchants who have agreed to give the American Rhododendron Society a referral fee of 4% to 25% on each sale "referred" by [WWW.ARSStore.org](http://WWW.ARSStore.org). Just use a link from the ARS Online Store site to go to a merchant's site and buy something like you normally would. You get the same low price and help the ARS!

### 46th Annual Rhododendron Show and Plant Sale

**Saturday, April 28th & Sunday April 29th, 2018**

***By Ann Wieland, Show Co-Chair (707) 502-7858***

ARS members and community members are encouraged to bring flowers, arrangements and photos for display at this 46th Annual Rhody Flower Show.

You can enter your trusses on **Friday April 27th from 5:00 pm-8:00 pm** at Miles Hall, Pacific View Charter School (formally St. Bernard's)—115 Henderson Street, Eureka, and on **April 28th from 8:00am to 9:00am**. No entries will be accepted after 9am on Saturday.

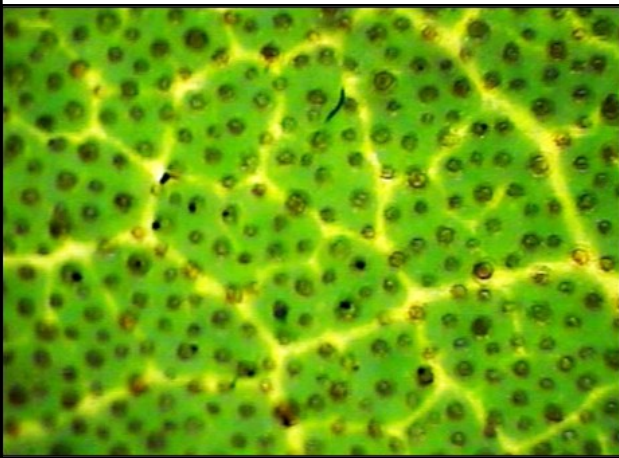
The **plant sale** will have two locations **Saturday 10am-3:00pm at Miles Hall**, and **Carson Park Between H and I entering on Carson Street from 11:00am-4:00pm**—but may close earlier if plants are sold out. And **Sunday from 10am-2pm at Miles Hall**. There will be no member presale on Friday night. Special member prices will be available at all plant sale locations. **Please bring your member cards.** Member prices will be **\$10 for 1-gal plants, and \$20 for 3-gal plants**. Non-member prices will be \$15 for 1-gal and \$25 for 3-gal plants. If 5 or more 1-gal are purchased they will be \$12 each.



## WORD OF THE MONTH – LEPIDOTE

By, Bruce Palmer

When you bring your trusses to the flower show this month (you **shall** bring some!), you will need to know or find out whether the plant is a **lepidote** or an **elepidote**. What does that mean and why is it important? There are so many species in the genus *Rhododendron* that taxonomists have divided the genus into eight or nine subgenera. The two largest subgenera are Hymenanthus and Rhododendron, comprising the lion's share of all the rhododendrons. If you are not entering fragrant rhodies, the chances are pretty high that your trusses are in the subgenus Hymenanthus. Members of this subgenus have leaves that have no scales on the undersides of the leaves. They may have greater or lesser amounts of "hair" on the undersides (called by rhodie people "indumentum"). They are said to be **elepidote**. If you turn the leaf over and the underside appears to be sprinkled with very fine pepper grindings (best seen magnified), the plant is a **lepidote** and is in the subgenus Rhododendron. The scales in **lepidote** rhodies are modified hairs (properly called trichomes) that cover the openings (stomata) that control how much air and water gets into and out of the leaf for photosynthesis and respiration. The purpose for stomata has long been debated. Some botanists argue that the scales repel insects; others say they help control the actions of the stomata. A number of years ago I went around our yard and counted insect-damaged rhodie leaves. There was not a significant difference between **lepidotes** and **elepidotes**, so I am inclined to favor the idea that scales help control air and water movement. The presence or absence of scales is one characteristic that is not just artificially imposed on rhododendrons, it is important in nature. Rhododendron species are notoriously easy to crossbreed - they even do so in nature – that the concept of species is rather loose in the genus. Not so with **lepidotes** and **elepidotes**. There are only a tiny number of examples of successful hybridization between the two subgenera, so it is pretty clear that the two subgenera, Hymenanthus and Rhododendron, are distinct. So, when you are entering your trusses at the show, remember that if they are not azaleas they are either **lepidote** or **elepidote** rhododendrons.



**SCALES ON LEAF UNDERSIDE**  
**R. 'Alice Eastwood'**  
**LEPIDOTE**



**SMOOTH LEAF UNDERSIDE**  
**R. 'Ivory Ruffles'**  
**ELEPIDOTE**



Plant of the Month  
*Rhododendron* 'Grandma's Hat'  
 By Don Wallace

Indeed, the flower on this rhododendron does remind one of a hat you might see someone's grandma wearing. A good name. The flower is full and a perfect shape to always be a prizewinner at any flower show. Each flower has a white background adorned with dark-purple edges, and a rich reddish-purple-black spotted flare in the throat and upper lobe. The plant grows large, between 6 and 8 feet tall and

wide over the years and has nice dark leaves. Unfortunately, the hybridizer left us with no record of the parents. I received this plant from Clint Smith who owned a small rhododendron nursery in Washington state and brought plants to both my nursery and the Eureka Chapter ARS every year in the distant past. Clint always had a smile on his face as he joked about the names of plants. I don't remember what he said about 'Grandma's Hat', although I am sure it was funny. He always made me laugh.

**It is Nominations and Election Time for the Eureka Chapter**

Your current leadership have all agreed to serve another year, nominations will also be accepted from the membership at the April meeting.

President; Max Abrahamsen  
 Treasurer; Tim Walsh  
 At-Large; Diane Larkin  
 At-Large; Ellen Gill  
 Past President; Ellie Gayner  
 Committees

Show and Sale; Ann Wieland and Lynne Sarty  
 Membership; Ellen Gill  
 Programs and Member Tour; Don Wallace  
 Newsletter; June Walsh  
 Publicity; Ellie Gayner

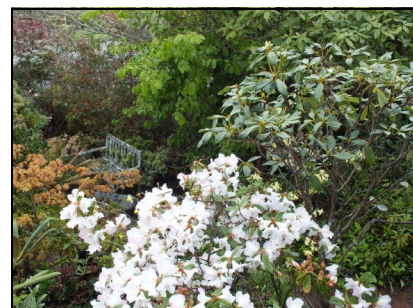
Vice President; Nelda Palmer  
 Secretary; Gail Ledbetter  
 At-Large; Sue Hemmann  
 At-Large; Margaret Cole

If you would like to contact any of these members please call or email June Walsh 707-443-0604 or [RhodyHostel@suddenlink.net](mailto:RhodyHostel@suddenlink.net). You can also send a message through the Web site at [www.EurekaRhody.org](http://www.EurekaRhody.org)

*Again the blackbirds sing; the streams  
 Wake, laughing, from their winter dreams,  
 And tremble in the April showers  
 The tassels of the maple flowers.*  
 -John Greenleaf Whittier (1807-92)

Left photo, *Meconopsis nepaulensis*

Right Photo, *Rhodo* 'Cow Bell' can you smell it?





## Know Your Soil

By Don Wallace

Here is another way to determine your soil type

### The Squeeze Test - step 1

An easy way to determine what type of soil that you have in your garden or landscape is the "Squeeze Test". Dig out a shovel full of soil in your planting area, squeeze a handful as tight as you can.

### The Squeeze Test - step 2

When you open you hand, if the clod falls apart, then you have sandy soil. If it stays together, go to step 3

### The Squeeze Test - step 3

If your clod stayed together, then poke it with a stick. If it crumbles apart, congratulations...you have loam soil, the best for growing plants. If the clod stubbornly stays together when you poke it, you have clay soil and will have to amend it appropriately to be more successful growing plants.

See the Eureka Chapter March 2018 Newsletter for Know your Soil, Drainage.



## The Vernal Equinox

Ah, spring! This season brings increasing daylight, warming temperatures, and the rebirth of flora and fauna. Spring began in the Northern Hemisphere on March 20, 2018. \*

This is the  
root of all  
weevils!!!



The word *equinox* is derived from the Latin words meaning "equal night." The spring and fall equinoxes are the only dates with equal daylight and dark as the Sun crosses the celestial equator. At the equinoxes, the tilt of Earth relative to the Sun is zero, which means that Earth's axis neither points toward nor away from the Sun. (However, the tilt of Earth relative to its plane of orbit, called the ecliptic plane, is always about 23.5 degrees.)

### Gardening Lore

Cabbage seeds are often planted at the equinox; old-time farmers believed that to make them grow well, you needed to plant them while wearing your nightclothes. (If you see your editor in her garden in her nightie you will know what she is up to.)

From The Old Farmer's Almanac

\*For the Eureka latitude of 40 +/- degrees north March 17th was the closest to equal with 1 minute more daylight, while March 20th had 9 minutes more daylight.

Eureka Chapter/American Rhododendron Society  
2050 Irving Drive  
Eureka, CA 95503-7022

Eureka Chapter Newsletter is published monthly  
except during July, August and November.

Submissions from members are encouraged and  
should be sent to June Walsh, Newsletter Editor,  
by email [RhodyHostel@suddenlink.net](mailto:RhodyHostel@suddenlink.net)  
Membership information and applications are avail-  
able from Ellen Gill. [Htg1anderg@suddenlink.net](mailto:Htg1anderg@suddenlink.net)

Eureka Chapter is a member of the **Humboldt  
Botanical Gardens**, Eureka, CA and **The Rhodo-  
dendron Species Botanical**, Federal Way, WA.

Eureka Chapter is a chapter of the American Rho-  
dodendron Society a 501 (c) (3) charitable organi-  
zation.

[www.EurekaRhody.org](http://www.EurekaRhody.org)



Eureka Chapter  
American Rhododendron Society

Rhododendrons  
in the Redwoods

## Future Programs

April 26, 2018	Ali Sarlak	Flora of Iran
April 27 to 29, 2018	Meeting and Annual Flower Show and Plant Sale	
May 24, 2018	Member Mini Show	
June 3, 2017	Member and Guest Garden Tour and Picnic	
July and August	No Meeting planned, spend the free time weeding!	
September 27, 2017	Program to be announced	
October 25, 2017	Program to be announced	
No meeting in November	Give Thanks for the company of Family and Friends	
December 6, 2017	Holiday Potluck	

Bring flowers to enter in the Rhododendron Show. ask you neighbors and friends to enter, or enter for them. See page 2



**COASTAL  
BUSINESS  
SYSTEMS**

*Imagine the Possibilities.*

**Mollie Smith**

P: 707-445-3095

F: 707-445-8743

[mollie@coastal-business.com](mailto:mollie@coastal-business.com)

336 First Street

Eureka, CA 95501

[www.coastal-business.com](http://www.coastal-business.com)  
Eureka Redding Chico

Digital  
Copiers  
Printers  
Fax

A Special "Thank you" to Mollie Smith and Coastal Business Systems for doing this special Newsletter printing which goes to every member. Mollie also printed our Convention 2017 color brochures.

## Eureka Chapter Officers and Board Members

For board member contact information or if you are interested in attending a board meeting which are held the first Wednesday of the month at 7PM, call or email June Walsh 707-443-0604