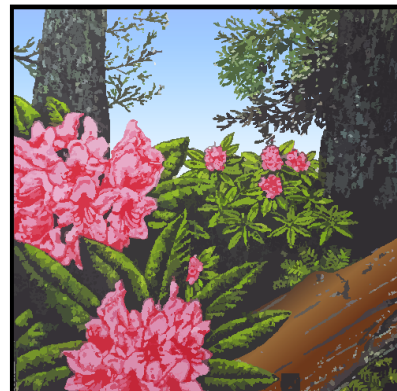


## AMERICAN RHODODENDRON SOCIETY

# Eureka Chapter

*The next meeting  
Thursday December 6, 6:00 p.m.  
Woman's Club  
1531 J Street  
Eureka, California*

*Holiday Potluck Dinner 6:00  
The Chapter will provide Tur-  
key and Ham, you bring the  
rest of the feast and your  
companionship*



Eureka Chapter  
American Rhododendron Society

Rhododendrons  
in the Redwoods

## December 2018

## How and When to Prune Rhododendrons

*The Eureka Chapter of the American Rhododendron Society will meet on Thursday, **December 6, 2018**. The meeting and program will be held at the Eureka Woman's Club 1531 J Street in Eureka beginning at 6:00 P.M. Our December meeting is the Holiday Pot Luck. The Chapter will provide Turkey and Ham and all the serving ware. You provide side dishes, salads, and desserts. You may also BYOB! Coffee, tea and juice will be provided.*

### How and When to Prune Rhododendrons

For the program at our December Potluck, Don Wallace will be discussing how and when to



prune rhododendrons. If you would like your rhodies to be bushy, and have more flowers, then you need to prune. Don will discuss the best times to prune, and several techniques from light tip pruning to heavy pruning for those old and leggy shrubs that don't look good anymore. Don will bring some leggy plants to perform actual pruning, so it is clear where to make cuts.

*Photos are those of the Newsletter editor, June Walsh, unless otherwise noted. Permission is granted to reprint any portion of this publication provided credit to the author and Chapter is given.*

## YOUR MEMBERSHIP NUMBER... WHAT IS IT GOOD FOR????

*By Ellen Gill*

This year we have added your American Rhododendron Society membership number to your membership cards. You will find this at the very bottom of the card and on your mailing label to the right of your name. It is also on your *Journal of the American Rhododendron Society* mailing label to the right of your name. I decided I had better find out what it was good for besides making up a column in my database. First of all you will need to use that number to register for a personal login with ARS.

Go to American Rhododendron Society <https://www.rhododendron.org>

From the menu bar near the top of the page select CHAPTER and from the dropdown menu displayed choose MEMBER (OARS). This will take you to a page displaying three columns.

### MEMBERS -- first column

This is where you can register for a personal login. In the first block of this column click on the "register for personal login". On the displayed page choose "register now". This will take you to a form to fill out. Follow the directions.

There are twelve blocks in this column but only the following three require a PERSONAL LOGIN to access, the remainder are free access.

**Journal of American Rhododendron Society Electronic Edition.** This is for those individuals who choose not to receive the Journal by mail but prefer to login and read it online. <https://www.arsoffice.org/jars/toc1.asp>

### Online membership renewal

Access the ARS Membership Roster <https://www.arsoffice.org/protect1/login1.asp>. Do you want to visit Kristian Theqvist in Finland? This is where you will find his contact information.

Once you have completed your registration you can use the links to go directly to these items.

Only the MEMBER column has blocks to be accessed with your personal login once you have registered. You are then logging in with your username and password. The CHAPTERS and SOCIETY columns are either free access or require chapter specific login.

## MORE MEMBER FUN STUFF

As the holiday season approaches, please consider using the [ARSSStore.org](https://www.arsstore.org) for online shopping that will benefit the ARS. Making a purchase through [ARSSStore.org](https://www.arsstore.org) generates a percentage of your purchase directly to the ARS at no cost to you. Along with Amazon, three new merchants now offer similar benefits: Best-Buy, Target, and Walmart. All of these merchants are accessed through the link. Do not click the Amazon Smile!

If you are a PRIME member of Amazon, use the [ARSSStore.org](https://www.arsstore.org) link then sign it to your PRIME account, Amazon will send a nice donation to ARS...as much as 6% of your purchase, at no cost to you.



*Meeting Hospitality, Eats and Drinks  
December is our Holiday Pot Luck.  
The Chapter will provide Turkey and  
Ham and all the serving ware. You  
provide side dishes, salads, and  
desserts. You may also BYOB!*





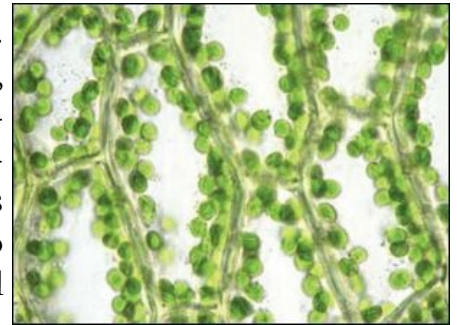
## WORD OF THE MONTH: INOSCULATION

By Bruce Palmer

Some of us recall being told as kids that the Latin word for kissing was **osculation**. We felt very sophisticated and grown up using the word instead of kissing. This month's word translated from the Latin means something like to kiss inside. Scientifically it means to place something inside or to connect. It's used in medicine to describe skin grafts and cardiac bypass surgery, among other applications. I had a stent **inosculated** into a coronary artery four or five years ago. The word is not used by the general public but is common in science, particularly in medicine.

In biology, plastids (Greek: *plastres*, a molder) and mitochondria (Greek: *mitros*, thread and *chondros*, grain) are examples of **inosculation** early in the history of life on earth. These organelles inside cells have their own DNA and reproduce independently of the cells. Their DNA shows that they are bacteria. They appear to have been **inosculated** into larger cells and had some of their functions repurposed. Mitochondria now serve cells as power houses to produce usable energy for all functions in the cells. Two types of plastids are important in botany. Chromoplasts give some of the colors in flowers and fruits. If you smash a piece of tomato and look at under a microscope, you will see that the color is contained in tiny red dots, the chromoplasts. More importantly, if you look at any leaf under a microscope, you will see that the green color is contained in small bodies inside the cells. These are the chloroplasts. Chloroplasts appear to

be descended from what we used to call Bluegreen Algae and now call Cyanobacteria. Chloroplasts and Cyanobacteria are the sole producers of the chemical energy that makes all life on earth possible.



**CHLOROPLASTS IN MOSS CELLS**



**INOSCULATED SYCAMORE TREES**

How does the word apply to Rhododendrons? Grafting is **inosculation**. When you graft you need to place the scion inside the stock in such a way that the cambium layers match up. Then you hope the similar cambium cells connect and produce connecting cells that transport water and nutrients up the stem and finished food down. The most obvious rhodie results of this process are the old rhododendrons in our yards that have pink or red flowers at the top and purple ones at the bottom. That is the result of having grafted desirable rhodies onto the root stock of *Rhododendron ponticum*. This was done in the past because *R. ponticum* is a very hardy species; it (or a hybrid of it) has become a major pest, a noxious weed, in the British Isles. Locally, this was done routinely by Charles Willis Ward, owner of Cottage Gardens Nursery in Freshwater and

Eureka. Ward started his nursery in 1915 and was the major shipper of rhodie plants all over the country. In about 1920 he shipped 100,000 plants on the NWP railroad from Eureka. He even supplied Van Veen Nursery in Oregon, a nursery that the Portland chapter inherited recently from Kathy Van Veen. Around here the most common example is probably 'Pink Pearl'. Cottage Gardens is no more and grafted rhodie plants are less common, but grafting is still practiced, especially in Europe. Another application of **inosculation** is what is commonly called ingrafting, where multiple branches or separate trees are brought together to produce decorative forms such as the illustrated Sycamore(s). Let's hear it for the applications of "kissing in".





## Plant of the Month: Azaleadendron 'Hardijzer's Beauty'

*By Don Wallace*

Technically this is an Azaleadendron, a cross between an azalea and a rhododendron. This exceptional cultivar flowers more heavily than either of its parents, so it is a worthy plant to buy. Not dependent on age, this plant will be completely covered with flowers when in full bloom and no leaves will be seen. Spectacular! One might want to plant these as a hedge or large grouping for drama in spring. Or, plant a group under a large towering rhododendron for another kind of

show. The plant takes pruning or shaping well as it sets bud so readily. Prune after blooming in the spring. You can expect this plant to be 3-4 ft tall and a bit more in width in 10 years. It prefers lots of light, so I wouldn't recommend planting in a shady location.





## **Eureka Chapter Flashbacks to 2018**



The Eureka Chapter Board and Worker Bees Meet the first Wednesday of the month to EAT and Work!



The Eureka Chapter's BIG project Hospice of Humboldt, bare ground before planting.



The April Rhodo Show and Sale...goes on rain or shine!



Eureka Chapter/American Rhododendron Society  
2050 Irving Drive  
Eureka, CA 95503-7022

Eureka Chapter is published monthly except during July and August.

Submissions from members are encouraged and should be mailed to June Walsh, Bulletin Editor, 2050 Irving Drive, Eureka, CA 95503-7022. Rhodyhostel@suddenlink.net

Membership information and applications are also available from Ellen Gill. C/O June Walsh. The Eureka Chapter is a member of the Humboldt Botanical Gardens Foundation, Eureka, Calif., and The Rhododendron Species Foundation, Federal Way, Wash.

Eureka Chapter is a chapter of the American Rhododendron Society.



*Eureka Chapter  
American Rhododendron Society*

*Rhododendrons  
in the Redwoods*



## Future Programs

November

No Meeting, Enjoy Thanksgiving with Family and Friends

**December 6, 2018**

**Holiday Potluck**

**Don Wallace**

January 24, 2019

Japanese Azaleas in the Wild

Atsuko Gibson

February 28, 2019

Plant Exploring in China

Glen Jamieson

March 28, 2019

Exploring Soils

James Cassiday

April 25, 2019

Gardens of Seattle

Don Wallace

April 26, 27, 28, 2019

Rhododendron Show and Sale

May 23, 2019

Member's Mini Show, Let us See Your Bloomers

June 2, 2019

Members' Gardens Tour and Potluck Picnic

Put these dates on your calendar now so you won't miss any of these great programs. Watch for the Eureka Chapter Newsletter for more info.



### Eureka Chapter Officers and Board Members

For board member contact information or if you are interested in attending a board meeting (first Wednesday of the month), call or email June Walsh 707-443-0604