

AMERICAN RHODODENDRON SOCIETY

Eureka Chapter

The next meeting

*Thursday February 28, 7:00 p.m.
Woman's Club
1531 J Street
Eureka, California*

Pre-Meeting No Host Dinner 5:15

Pho Thiên Long
307 4th St, Eureka
Call Nelda, 707-443-8049
To Reserve your seat



*Eureka Chapter
American Rhododendron Society*

*Rhododendrons
in the Redwoods*

February 2019

Plant Exploration in Sikkim

*The Eureka Chapter of the American Rhododendron Society will meet on Thursday, **February 28, 2019** The meeting and program will be held at the Eureka Woman's Club 1531 J Street in Eureka beginning at 7:00 P.M.*

Dr. Glen Jamieson has a B.Sc in Agriculture from McGill University and a M.Sc. and Ph.D. in Zoology from University of British Columbia. He worked for Fisheries and Oceans Canada (DFO) as a research scientist for 31 years, both in the Maritimes (5 yr) and at the Pacific Biological Station in Nanaimo, BC (26 yr). He retired from DFO in 2008, and became editor of the Journal of the American Rhododendron Society in 2009. He joined the ARS in 1995, and has explored for plants in Yunnan, China (2005); Borneo (2008); Ecuador and Peru (five trips between 2008-2014) and in Sikkim, India (2015). He has travelled extensively elsewhere as well and with his wife Dorothy, lives and maintains a garden in Parksville that is periodically on the his local chapter's (Mount Arrowsmith; MARS) garden tour, where he also has an extensive vireya collection, possibly the largest in Canada. He is currently in his third presidency of MARS, and is a member of the MARS committee organizing the Fall 2019 ARS convention, which will be in Parksville, BC.

At our meeting Glen will give two presentations: a main talk on "Plant Exploration in Sikkim", and a second short, educational talk on an aspect of plant biology. Glen routinely gives monthly educational talks to ARS chapter members on botanical features of rhododendrons in an effort to demystify botanical terminology.



Photos are those of the Newsletter editor, June Walsh, unless otherwise noted. Permission is granted to reprint any portion of this publication provided credit to the author and Chapter is given.

Plant of the Month
***Rhododendron* 'Rubicon'**

By Don Wallace

I always say "If you are going to buy only one rhododendron, buy *Rhododendron* 'Rubicon'. The main reason that I say this is because 'Rubicon' probably has the very best foliage of any rhododendron, but will also, quite often, bloom over an extended period of time, giving you color for March, April and even May.

Hybridized by R.C. Gordon of New Zealand, the cross is *Rhododendron* 'Noyo Chief' x *Rhododendron* 'Kilimanjaro'. This hybrid has inherited the glossy foliage from *Rhododendron* 'Noyo Chief', yet is a much smaller growing plant. Over time, 'Rubicon' will become 4 ft. tall x 6 ft. wide, with no stems showing. I have seen this plant used as a specimen for an

entrance way as well as a foundation plant that will not overgrow the windows. *Rhododendron* 'Rubicon' can grow in full sun in Humboldt County, or in a shady area as well, always having lovely dark-green shiny foliage.



Help Wanted

The Eureka Chapter is looking for someone to become the Chapter's Publicist, to post Chapter programs in all the public service announcement locations, to learn where to place articles. No experience needed, a wing will be extended to train. Please apply with Publicity Chair Ellie Gayner callengayner@gmail.com or 443-1291.

Gardeners Wanted. The Wild Weeders and Grateful Deadheaders at Humboldt Botanical Garden are "hiring". Applicants need only a willingness to enjoy the most beautiful Temperate Woodland Garden in Humboldt County, visited by people from around the world. Bring your own tools, gloves, hat, sun screen and a bit of humor. On the job training. Apply with Volunteer Coordinator Ibbey Gerner volunteer@hbgf.org or 499-3133 You may also apply with June Walsh RhodyHostel@suddenlink.net or 443-0604.

WORD OF THE MONTH: CLADE

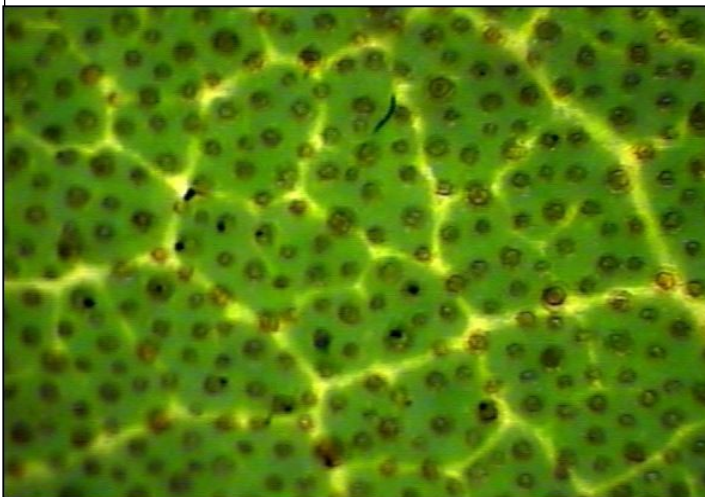
By Bruce Palmer

This month's word, **CLADE**, is derived from the Greek *Klados*, group. It is relevant this month because we will hear from the Editor of the Journal American Rhododendron Society, Glen Jamieson. For the past three issues of the journal, Glen has been explaining classification within the genus *Rhododendron* in articles entitled *Rhododendrons for Beginners*. There are so many probable species within the genus *Rhododendron* (well in excess of 1,000) that various categories of subgenera, sections and smaller categories have been established over the years. Most current texts list either eight or nine subgenera, depending on whether you believe the Vireyas (that we can grow outside here) are in a separate subgenus. It was already obvious in the mid 1960s when the word **CLADE** was coined by one of the greatest biologists of the twentieth century, Ernst Mayr, that our ideas of relationships among organisms did not square with DNA evidence. I remember taking a seminar on taxonomy in about 1966 where that very topic was current. Since that time it has become increasingly obvious that our ideas of relationships among plants are artificial and do not reflect what is true in nature. We now know that not all organisms we call algae are plants and that fungi are more closely related to animals than to plants. We also found that the hierarchy we learned in high school (kingdom, phylum [division], class, order, family, genus, species) is not adequate to explain the relationships of organisms in nature.

That's where the idea of **CLADES** comes in. A **CLADE** is a group of organisms whose DNA shows that they have a common ancestor. In 2005, Dr. Ben Hall and his lab assistants and grad students at the University of Washington did a thorough study of 87 rhodie specimens, mostly from the Rhododendron Species Botanical Garden. They established that there are 3 primary **CLADES** in the genus, with some minor outliers, and proposed that there are in fact only four legitimate subgenera in genus *Rhododendron*.

It took some time for taxonomists to come around. In 1867, the International Botanical Congress established rules for naming relationships among plants. The rule book, titled the *International Code of Botanical Nomenclature* has been in force ever since and has been revised about every ten years. Finally, in 2012, the International Botanical Congress came to grips with the DNA problem and changed the title to the *International Code of Nomenclature for Algae, Fungi and Plants* to better reflect current thinking.

If you'd like to understand the new Rhododendron classification system in detail, digest Glen's articles in the journal, but two of the proposed subgenera will be very important to us at the flower show in April: subgenera *Rhododendron* and *Hymenanthus*. The show is laid out by "Lepidote" and "Elepidote" species and hybrids. If the leaves have tiny scales on the underside they are lepidotes and are in subgenus *Rhododendron*; if they don't have scales and are not azaleas, they are in subgenus *Hymenanthus*. If you don't understand this, do not worry – there will be plenty of help at the show. Meanwhile, let's enjoy Glen's presentation on Rhododendrons in China.



LEPIDOTE LEAF
R. 'Alice Eastwood'



R. "Ivory Ruffles" 20X glabrous underleaf

ELEPIDOTE LEAF
R. 'Ivory Ruffles'

Eureka Chapter/American Rhododendron Society
2050 Irving Drive
Eureka, CA 95503-7022

Eureka Chapter Newsletter is published monthly
except during July, August and November.

Submissions from members are encouraged and
should be sent to June Walsh, Newsletter Editor,
by email RhodyHostel@suddenlink.net
Membership information and applications are avail-
able from Ellen Gill. Htg1anderg@suddenlink.net

Eureka Chapter is a member of the **Humboldt
Botanical Gardens**, Eureka, CA and **The Rhodo-
dendron Species Botanical**, Federal Way, WA.

Eureka Chapter is a chapter of the American Rho-
dodendron Society a 501 (c) (3) charitable organi-
zation.

www.EurekaRhody.org



*Eureka Chapter
American Rhododendron Society*

*Rhododendrons
in the Redwoods*

Future Programs

February 28, 2019

March 28, 2019

April 25, 2019

April 26, 27, 28, 2019

May 23, 2019

June 2, 2019

Plant Exploring in Sikkim

Exploring Soils

Gardens of Seattle

Rhododendron Show and Sale

Member's Mini Show, Let us See Your Bloomers

Members' Garden Tour and Potluck Picnic

Glen Jamieson

James Cassiday

Don Wallace



Winter in the Temperate Woodland Garden at Humboldt Botanical Garden

Eureka Chapter Officers and Board Members

For board member contact information or if you are interested in attending a board meeting which are held the first Wednesday of the month at 7PM, call or email June Walsh 707-443-0604