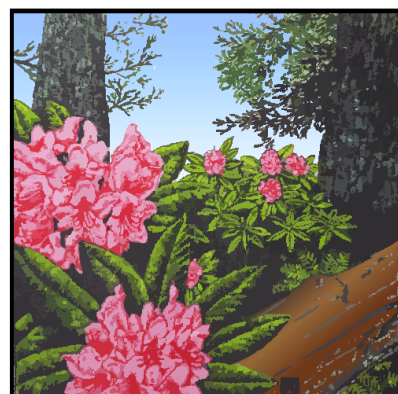
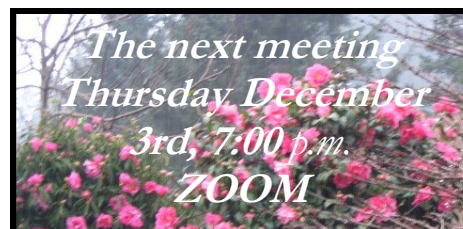


AMERICAN RHODODENDRON SOCIETY

Eureka Chapter



Eureka Chapter
American Rhododendron Society

Rhododendrons
in the Redwoods

Thursday December 3rd at 7:00 PM ZOOM With Us!

The Eureka Chapter of the American Rhododendron Society members and guests are invited to share some holiday cheer via Zoom. Don Wallace, proprietor of Singing Tree Gardens Nursery, will be our guest speaker. He will talk about pruning; timing, technique and why to prune. This will be via ZOOM, see the next page for details.



Photos are those of the Newsletter editor, June Walsh, unless otherwise noted. Permission is granted to reprint any portion of this publication provided credit to the author and Chapter is given.

COME ZOOM WITH DON WALLACE

Topic: Eureka Chapter Membership Meeting Dec 3rd

Time: **Thursday Dec 3, 2020 06:30 PM Pacific Time**

Join us early to know that you have a good connection with the meeting, get settled in and have a chance to visit with other guests before the presentation. Our meeting will begin at 7:00 sharp, so please be sure to be joined in no later than 6:55 pm .

To Join The Zoom Meeting click this link:

<https://zoom.us/j/99382309059>

Meeting ID: 993 8230 9059

One tap mobile

+16699009128,,99382309059# US (San Jose)

Dial by your location

+1 669 900 9128 US (San Jose)

Meeting ID: 993 8230 9059

Links to this meeting and more are available at

www.EurekaRhody.org



Eureka Chapter
American Rhododendron Society

Rhododendrons
in the Redwoods

Holiday Shopping!!!

A few 1-Gal rhododendron and azalea plants
\$7 each, including tax

Rhododendrons in the Redwoods
this logo on grey cotton shirt

Sweat shirts (Large and X Large) \$15 each

T-Shirts (Medium, Large and XL) \$10 each

Limited supply of sizes so order early and buy many, Plants and Shirts make great gifts, tax included!

Contact June at 707-443-0604 or Rhodyhostel@suddenlink.net to arrange for shopping and delivery.

President Max's Message:

We look forward to more and better in the near future! Just a few pictures are worth the Membership in the Eureka Chapter!



Plant Sale & Smiling faces...!



A Botanical Garden Tour



The Mini-Show!

Thank you, from the Eureka Chapter Board of Directors!!!



In the meantime, let's Zoom!!!!



R. 'Ever Red'

Plant of the Month

Rhododendron 'Ever Red'

New from Europe, this unusual foliage plant will have red leaves most of the year. As spring approaches, the leaves start to shade towards green, but are more bronze even then. The flowers are blood-red color in lax trusses. The plant stays low and contrasts nicely with the green plants nearby. R. 'Ever Red' is the absolute darkest red-purple

leaved rhododendron to date with leaves so dark, they sometimes appear almost black. The undersides of the leaves are a dark purple color. Grows low, to 2 ft tall x 3-4 ft wide. The best use of this rhododendron is for contrast against lighter foliated plants. If planted with the silver to white foliage of Artemesia or 'Lamb's Ear', the effect will be stunning!

Word of the Month– Bract

By Bruce Palmer

The holidays are coming up rapidly. If you are considering buying a Poinsettia, this month's word, **BRACT**, might be of interest. **Bract** derives from the Latin: *Bractae*, a thin iron sheet. **Bracts** are modified leaves, though they often do not appear to be. Goethe, the famous author of the epic poem *Faustus*, observed that "everything is leaf, and through this simplicity the greatest diversity becomes possible."

Bracts regularly serve as protective structures in flowering plants. Typically they drop off as the leaves or flowers develop, but not always. In grasses they persist and are the obvious features around nearly invisible flowering parts and around the seeds of grains before they are winnowed. The papery structures around tomatillos are **bracts**.

A number of flowering plants use brightly colored **bracts** as



Poinsettia flowers surrounded by red bracts



Buds of *R. liliiflorum* emerging from protective bracts

attractants for pollinators and landing platforms for pollinating birds. The Poinsettia (*Euphorbia pulcherrima*) is a good example. The Striking red structures are modified leaves, **bracts**, that serve to attract humming birds and furnish them a landing spot. The flowers are tiny separate yellowish female and male structures at the center of the display. If you are hoping to keep this year's Poinsettia around to have it rebloom next year, forget it. Poinsettias are native to tropical Mexico and require a specific day length to bloom. This can only be duplicated in a controlled greenhouse at this latitude. Poinsettias were discovered in Mexico by Joel Poinsett during the War of 1812. Poinsett was sent to Latin America by President Madison to observe the progress of the uprisings that ultimately gave the countries their independence from Spain. Poinsett brought the plant to the Southeast United States where it became an instant hit.

The loose pieces we remove to display our rhodies at the annual flower show are bracts. They are not trash but are there to protect the leaves or inflorescences (trusses) from the time they first develop until it comes time to flower or put on new growth. All Rhododendrons use bracts to protect their leaves and flower clusters during development. Rhododendron inflorescences have their protective **bracts** arranged in a whorl-like spiral around the base and interspersed among the individual flowers. As the flowers emerge, the **bracts** drop off. With the exception of our fragrant rhodies, most Rhododendrons do not have a calyx around the flower petals. With **bracts** a calyx is not needed for protection of the other flower parts. If they have a calyx, it is usually reduced to a small swelling at the base of the flower. Occasionally a sport appears where the calyx is well-developed and colorful. That can be desirable to Horticulturists, who often call that configuration "hose in hose".



Poinsettia nursery ready to sell you a few plants for the holidays

As you enjoy the holiday Poinsettias, perhaps the red **BRACTS** will have a new meaning. They will certainly have importance to the hummingbirds who went south to Mexico a few weeks ago for their winter sojourn.



Humboldt Botanical Garden's Moss Family Temperate Woodland Garden will be receiving plant identification labels thanks to the work of Eureka Chapter members Darci Short and Frank Bickner. The top pictures show them getting the labels ready to place in the garden. The middle and lower picture show fall color and fall blooming Encore azaleas.

Eureka Chapter/American Rhododendron Society
2050 Irving Drive
Eureka, CA 95503-7022

Eureka Chapter Newsletter is published monthly except during July, August and November.

Submissions from members are encouraged and should be sent to June Walsh, Newsletter Editor, by email RhodyHostel@suddenlink.net
Membership information and applications are available from Ellen Gill. Htg1anderg@suddenlink.net

Eureka Chapter is a member of the **Humboldt Botanical Gardens**, Eureka, CA and **The Rhododendron Species Botanical**, Federal Way, WA.

Eureka Chapter is a chapter of the American Rhododendron Society a 501 (c) (3) charitable organization.

www.EurekaRhody.org



Eureka Chapter
American Rhododendron Society

Rhododendrons
in the Redwoods

Future Programs

All in-person meetings and programs are suspended as we deal with the health concerns of Covid 19. We will be bringing you some online programming and live meetings using ZOOM and will keep you posted. Please check www.EurekaRhody.org for updates, informative articles, old newsletters and hopefully a program or two.

The Eureka Chapter Telephone-tree callers will be on the phone to keep you up-to-date with anything new. Tell them thank you for their calls!

ZOOM Programs

November
and friends

December 3, 2020
January 28, 2021

February 25, 2021

March 25, 2021

April 22, 2021

May 27, 2021

No meeting, Enjoy a virtual feast with family

Don Wallace, Pruning Fundamentals
Steve McCormick and John Stephens, Rhodos in Finland

Glen Jamieson, Travels up the Salween River, Yunnan, China

Presentation to be announced

Presentation to be announced

Mini Show

Eureka Chapter Officers and Board Members

For board member contact information or if you are interested in attending a board meeting which are held the first Wednesday of the month at 6PM via ZOOM, call or email June Walsh 707-443-0604