

AMERICAN RHODODENDRON SOCIETY

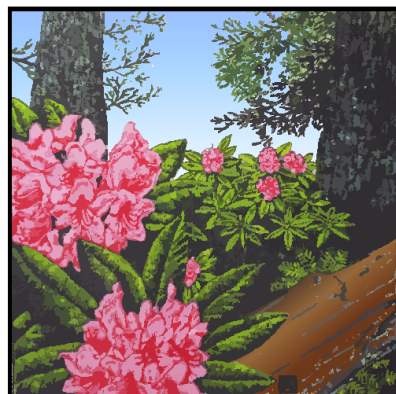
Eureka Chapter

The next meeting, IN-PERSON!

Thursday February 23, 2023 7:00 p.m.

Eureka Woman's Club

1531 J Street, Eureka CA



Eureka Chapter
American Rhododendron Society

Rhododendrons
in the Redwoods

February 2023

Walsh Garden Wanderings



The Eureka Chapter of the American Rhododendron Society will meet this coming Thursday, February 23, 2023. The meeting and program will be held at the Eureka Woman's Club 1531 J Street in Eureka beginning at 7:00 P.M.

Eureka Chapter President Tim Walsh will be our featured speaker. Walsh is the 4th most common Irish surname, meaning "foreigner", literally "Welshman". In 1169, Norman mercenaries landed in Ireland at the invitation of Dermot MacMurragh the ousted King of Leinster, who had sought their help in regaining his kingdom. The Norman mercenaries included Welsh, Cornish and Cumbrian soldiers many of whom never returned to their homelands. The Normans never left either! (a fine read: Malachy McCourt's History of Ireland).

Timothy Patrick Walsh was born and raised a 4th generation Californian and Humboldt-er. After attending University of Southern California Tim became a sheep boy on the Southern Humboldt ranch of his dad's longtime friend. He thought his prospects of making a living as ranch-hand were poor, so he became a real estate broker and finally settled in as a Stockbroker and Certified Financial Planner for more than 30 years.

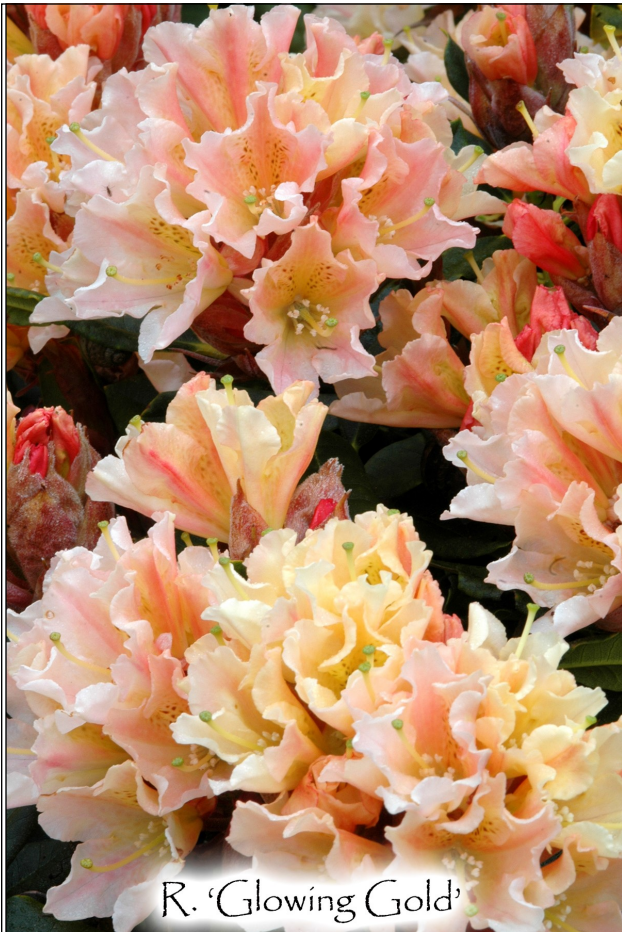
In the '80s Tim had an epiphany in Hendricks Park Garden in Eugene, OR when his nose discovered *Rhododendron* 'Loderi King George'. He had no idea there were scented rhododendrons. He had grown up with the thousands of *Rhododendron* 'Countess of Derby' which in Eureka were planted by Cottage Gardens for the cut-flower trade and sold as R. 'Eureka Maid'. As a little boy he would break off branches of the pink flowers and carry them up the street to sell for candy money (his dad was a dentist). He began a long relationship with the ARS at the urging of Catherine Weeks of Westgate Garden Nursery. First as chapter President (an office he reprises once again), then treasurer, then Treasurer of ARS, and currently District 5 director where he sits on the Executive Board. He is thoroughly Rhodo-holic. Tim and other Eureka Chapter ARS members have been instrumental in developing, selecting plants and caring for the Moss Family Temperate Woodland Garden at Humboldt Botanical Garden. Tim is a Master Gardener and the 2007 recipient of the American Rhododendron Society Silver Medal.

Tim's program will be about the many gardens, near and far, that he has visited.

Eureka Chapter Members planting the Moss Family Temperate Woodland Garden at Humboldt Botanical Garden 2008 and 2009
Find yourself! The garden was named for Larry Moss (1934 to 2006) a long time Eureka Chapter member and benefactor of HBG



Photos are those of the Newsletter editor, June Walsh, unless otherwise noted. Permission is granted to reprint any portion of this publication provided credit to the author and Chapter is given.



R. 'Glowing Gold'

Plant of the Month: *Rhododendron* 'Glowing Gold'

By Don Wallace

Originally known as 'Buna', this plant, when in full bloom, is literally glowing like gold. The plant will grow to be 3 ft tall and a bit wider in 10 years. The leaves are smaller and have wavy edges, so looks good when out of bloom. We like this one for its ability to make so many flower buds and cover itself with flowers in April. The creator, Frank Fujioka, decided to change the name to 'Glowing Gold', as 'Buna' did not mean anything to anyone else. Good call Frank! The parentage is 'Yaku Sunrise' x 'Lem's Cameo', and both of these parents are top rated plants, so it is not surprising that this one is good. The 'Yaku Sunrise' adds to the hardiness of the plant, so can take temperatures down to 10 degrees F. Since 'Glowing Gold' does not get large, there will be room in most gardens for this plant.

WORD OF THE MONTH , By Bruce Palmer

This month's word is MERISTEM. The word is derived from the Greek "merizein" meaning to divide. The stem part of the word is not related to the current controversy over stem cells in humans that do vaguely the same thing as meristem cells in plants. Meristem cells give rise to all other cells in plants. They are located continuously all around and at the ends of stems and roots. They can be at the tips of branches where they are called apical meristem or around the sides of the branches or roots, where they are called lateral meristem. Another term for lateral meristem is cambium, from the Latin "cambiare" meaning to exchange. Cambium is called that because it can make conducting tissue on the outside of itself that is different from the conducting tissue on the inside. Any meristem, including cambium, can make growth buds. When growth buds begin, they aren't committed to becoming leaves or flowers. Various environmental conditions dictate what happens. You may have noticed that buds you thought would become flowers end up as leaves or vice-versa. By this time of year the buds are committed but they weren't when they first appeared. Meristem can make roots also. That's how you get roots from stems of cuttings or air layers. Meristem cells are what allows plants, unlike animals, to grow continuously throughout their lives.

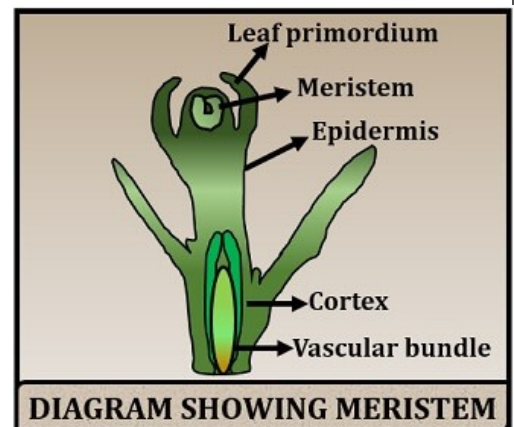
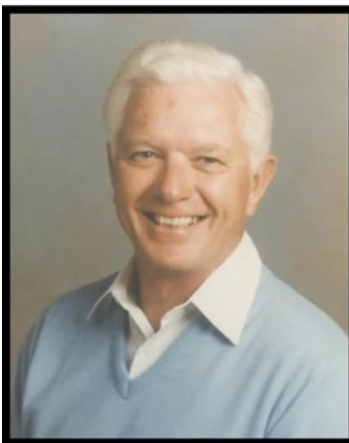


DIAGRAM SHOWING MERISTEM



Long time Eureka Chapter Member Chester Phillip Merklin, Jr. ("Phil") died on October 12, 2022, at the age of 97, in Eureka, Ca. He was surrounded by his loving family. "Phil" was born in Portland, Oregon, on October 22, 1924.

He enlisted in the Air Corps Branch in 1943, during WWII. Phil proudly served as co-piloted on the B-24 Liberator. He was honorably discharged from the U.S. Air Force in 1946. Phil then attended Oregon State University in Corvallis, Oregon, where he graduated with a B.S. degree. After his first wife Gayle's, passing, he married Bette Watkins of Eureka, Ca. They shared 25 years of bliss, traveling the world, golfing, gardening, and making wonderful memories for their children, grandchildren, and great grandchildren. Phil is survived by his adoring wife, Bette.

The Eureka Chapter visited Phil's and Bette's garden in Eureka where grand old rhododendrons frame a lovely lawn in a valley like setting.



Long time Eureka Chapter member and Past President Betty Bottemiller passed away peacefully on Friday November 18, 2022 at the age of 85. Betty is survived by her two daughters, Kris Rodden and Connie Bottemiller . Her husband Ron passed away in 2013, they were married for 52 years.

Betty will always be remembered for her loving soul, wonderful smile, sense of humor and warm and friendly personality. She loved to share her garden which overlooked Baywood Golf and Country Club. The Eureka Chapter was welcomed several times as was the Humboldt Botanical Garden's fund raiser garden tour. She loved to share her plants and would be ready to dig something up for you. Her favorite saying was "Remember You're Special", and Betty, too, was special.



Betty is shown here with Eureka Chapter members in her garden in 2006.



In September 2003 the Eureka Chapter took a trip to the Trinity River to collect rocks for our gardens. This picture shows people who are still members and two very young people who are now adults. Were you with us?

Weed, Friend or Foe?

By June Walsh

We would not too often think about the plants of our favorite beverages as being weeds...but now they are mostly grown where they did not originate and have supplanted native plants. I am talking about *Coffea arabica*, *Coffea canephora*, *Coffea liberica*, *Camellia sinensis* and *Theobroma cacao*. These plants seem to have all evolved to produce Caffeine but each uses a different set of genes. Researchers believe that since they use different genes to produce Caffeine that these plants evolved Caffeine at least twice. The plants did not have your cup of morning Joe in mind though; instead caffeine is *allelopathic*. Which means that the leaves and litter of the plant have chemicals that suppress or eliminate germination of other plants (Rhododendrons leaves are also *allelopathic*). Our morning cup of comfort, or Caffeine chemical addiction, has another purpose for the plants and that is, “Caffeine also habituates pollinators and makes them want to come back for more, which is what it does to us, too.” according to Victor Albert a genome scientist at the University of Buffalo New York.

Resource Scientific American September 2014



What a great month it's been! I often forget how many wonderful plants bloom around Humboldt Bay in the winter. Rhododendrons like 'Saffron Meadow', the arboreum species and hybrids, the variegated 'President Roosevelt' and 'Seta' are almost done at this point but the season has only just begun!

Our companion plants like *Camellia williamsii* 'Donation' (...somewhat resistant to the blossom rot that is so prevalent in our wet winter air), a bunch of Magnolias (...I often say... “the good news is that Magnolias bloom in our winter and the bad news is that Magnolias bloom in our winter...!”) since our winters here along Humboldt Bay usually bring the big winds that shred the Magnolia's blooms. A great tree to find is *Luculia*! It has great shiny leaves and a fabulous scent to its flowers that look and smell like Jasmine! And then there are Erica winter heaths, Camellias, Pieris, Daffodils, Hellebores, Cyclamen, Forsythia, winter blooming Daphnes...and on, and on...!

So, “our Rhody season” begins. I look forward to another great bloom year like last year if the bud-set proves to be true. I look forward to seeing ALL of you at the meeting to share a few of the gardens that we have visited both here and abroad. As they say in show business...”let the show begin”! *Musings of President Tim Walsh*



Eureka Chapter/American Rhododendron Society

2050 Irving Drive

Eureka Chapter Newsletter is published monthly except during July, August and November.

Submissions from members are encouraged and should be sent to June Walsh, Newsletter Editor, by email RhodyHostel@suddenlink.net

Membership information and applications are available from Ellen Gill. Htg1an-derg@suddenlink.net

Eureka Chapter is a member of the **Humboldt Botanical Gardens**, Eureka, CA and **The Rhododen-**



Eureka Chapter
American Rhododendron Society

Rhododendrons
in the Redwoods

Future Programs

The Eureka Chapter is ready to welcome its members and guests back to the Eureka Woman's Club for in-person meetings. The Eureka Chapter Telephone-tree callers will be on the phone to keep you up-to-date with anything new. Tell them thank you for their calls!

February 23, 2023 7:00 President Tim Walsh, Glorious Gardens

March 23, 2023 7:00 Glen Jamieson, Road Trip around Iceland

April 27, 2023 7:00 Don Wallace, Something Exciting about Rhododendrons

April 28, 2023 Rhododendron Show and Sale, location to be determined

May 25, 2023 6:00 Members' Mini Show and Potluck

June 5, 2023 Garden Tour, Bring-your-own-picnic

All programs subject to change



"Gardeners spend half their time on their knees and the other half trying to get up."

— Anonymous

Growing in the Moss Family Temperate Woodland Garden at Humboldt Botanical Garden is *Vaccinium gaultheriifolium* or Himalayan Blueberry. This semi-tender (to 25 F degrees) plant came as a gift from the Rhododendron Species Botanical Garden to be grown outside, where they need to be provided winter protection. It stands about 7 feet tall and is as wide and bears beautiful small campanulate flowers and brilliant dark blue berries. The berries are NOT sweet like its American cousin, a volunteer recently said of its tannic taste that it was like chewing a banana peel. It makes interesting Jam.

Eureka Chapter Officers and Board Members

For board member contact information or if you are interested in attending a board meeting which are held the first Wednesday of the month at 7PM all members are welcome, call or email June Walsh 707-443-0604